

Plants – Mostly Tropical

An Exhibition of
Drawings and Paintings
By Marion Ruff Sheehan



The Hunt Botanical Library
Carnegie-Mellon University
Pittsburgh, Pennsylvania

Plants – Mostly Tropical

An Exhibition of
Drawings and Paintings
By Marion Ruff Sheehan

Compiled by John V. Brindle

26 April to 15 October, 1971

The Hunt Botanical Library
Carnegie-Mellon University
Pittsburgh, Pennsylvania
1971



FOREWORD

In the early summer of 1946 a vacancy existed at Cornell University's L. H. Bailey Hortorium for a botanical illustrator. Learning of this, Professor Margaret Fulford of the University of Cincinnati's Botany Department wrote me that a recent graduate from that department had demonstrated unusual artistic talent and that I should meet, and interview her. She was Marion Elizabeth Ruff, working that summer as a waitress in a small hotel in the Adirondacks of New York State. Although she moved with her parents to Cincinnati early in her childhood, she was born in Philadelphia (17 December 1923) and is the first native daughter of Pennsylvania to have a one-man exhibition at this Library.

After seeing examples of her work, I visited Marion in the mountain resort where she was working. This led to her engagement for the position at Cornell. There she produced meticulous pen and ink drawings for Liberty Hyde Bailey, especially of species of blackberries and palms, and of other botanical subjects for others on the staff.

Early in her appointment, Marion found the demands to be for higher levels of accuracy than had been required for undergraduate botany notebooks. As her knowledge of plant anatomy and morphology expanded, her working vocabulary and comprehension of descriptive terms multiplied. The patience required to produce acceptable illustrations of minute details, precisely measured under the microscope to tolerances of one-tenth of a millimeter, had to be developed. Marion was ever conscious of the value of time and of the dollar-cost to the employer of a given drawing. Her ingrained sense of frugality undoubtedly whetted the urge to work with a minimum of lost motion and a maximum of efficiency. Her natural urge to draw quickly what she saw had to be suppressed in the interest of maximum and measured accuracy, and of fidelity in every detail. With these increases in botanical knowledge, and her acquirement of a self-discipline of inner urges to work swiftly, there came also a marked increase in technical skill. She had from the beginning the ability to impart three-dimensional character to a drawing. With maturity there came the skill with pen to produce drawings of accuracy as well as of beauty. Her line is firm and sure in its subordination of minor to major structures. Shading depicts form so convincingly that no doubt remains as to whether one is looking at a bump or a depression. With the benefit of graduate courses in botany taken at Cornell, and tutelage received from those for whom she worked, her botanical proficiency soon became that of a professional, and with this added attribute her competency rose to new heights.

Marion was always ambitious to expand her skills and increase her versatility. Her inner drive to excel is irrepressible. At Cornell this led to experimentation with media new to her. A set of some 70 colored wall charts, illustrating the diagnostic features of as many families of plants for a taxonomy course, were executed in pastel. Two of them appear in this exhibition (Nos. 8,9). Her commissioned portraits of children and adults, done in the early 1950's in pastel and charcoal, are not uncommon in the Ithaca area. Her pencil sketches of local landscapes were reproduced on privately distributed Christmas cards.

The urge for self-improvement led to her completing the requirements and receiving (in 1950) an M.A. in Fine Arts from Cornell, while continuing as staff artist. Her dissertation was a sumptuously illustrated presentation on the suitability of various techniques and media to best illustrate floral and plant materials in a variety of ways. It strongly defended the thesis that the artist/illustrator can more effectively achieve satisfactory results than can the photographer.

When Marion Ruff arrived at the Hortorium, work was in progress on a revised edition of Bailey's *Manual of Cultivated Plants*. For this she completed 102 of the 197 figures in the volume. Four years later she completed 106 additional pen and ink and 9 pencil figures for my textbook, *Taxonomy of Vascular Plants* (The Macmillan Co., 1951), and subsequently 65 pen and ink drawings for my *Introduction to Plant Taxonomy* (1955).

Through the initial work by Bailey, and subsequently that of his successor, Harold E. Moore, Jr., the Bailey Hortorium for half a century has been the world center for studies on the identification of palms. While the palms are often a conspicuous part of a tropical landscape, the flowers by which they are identified are small and often minute. Knowledge of palm morphology is essential to the illustrator of publications about them. Through her work at the Hortorium, and subsequently as a free-lance artist working in the tropics and subtropics, Marion Sheehan has established herself as the leading illustrator of palms and surely is more knowledgeable than any other about this dominant family of tropical plants.

While at the Hortorium, Mrs. Sheehan laid out and executed many of the plates illustrative of diagnostic features of individual genera of cultivated plants for a future edition of Bailey's *Standard Cyclopedia of Horticulture*. She continued this work after moving to Florida, and about 300 such plates are now at the Bailey Hortorium. A small selection of them is in this exhibition (Nos. 3-6).

In 1952, she married Thomas J. Sheehan of New York, himself a graduate of Dartmouth and holder of a Ph.D. in floriculture from Cor-

nell. After an initial position at a federal Experiment Station in Tiffin, Georgia, Dr. Sheehan in 1954 joined the staff of the Department of Horticulture, University of Florida, Gainesville. There, with their three children, Tom and Marion have since made their home.

In his specialty with tropical ornamental crops, Dr. Sheehan has enjoyed one- and two-term professional appointments in Hawaii and the Philippines, accompanied by his family. This gave Mrs. Sheehan the opportunity to study and paint tropical horticultural and botanical subjects in many gardens of the Far East, and in Australia, Singapore, Thailand, and Fiji, and thus explains the presence of water color portraits in this show of some fruits and flowers not known in gardens or conservatories of this country, notably the Balsa tree, *Ochroma pyramidale* (No. 17), the rose-red Malaysian relative of the Morning Glory, *Stictocardia campanulata* (No. 16), and the Jade-Vine of the Philippines, *Strongylodon macrobotrys* (No. 39).

Working as a team, she and her husband have produced a number of publications made more useful and informative by her illustrations. These include circulars on subtropical ornamental plants issued by the University of Florida, and illustrated with pen and ink drawings, the series of scratchboard drawings for his series of articles on foliage plants, reproduced in *Florists' Review*, and a continuing series of color plates illustrating genera of cultivated tropical orchids, reproduced in the *American Orchid Society Bulletin*.

The earliest reproductions of her color work are those in the book *Care and Feeding of Garden Plants* (1954), illustrating the various symptoms of plant nutritional deficiency. Here, the reproduction quality is far superior to that in The Macmillan Company's reproduction of her paintings in Harold E. Moore, Jr.'s *African Violets, Gloxinias, and Their Relatives* (1957). As can be seen in this exhibition from comparison of original with the reproduction, the same loss of quality is apparent in the color plates of her orchids published in the *American Orchid Society Bulletin*.

The appearance of her work in a wide range of publications generated a demand for original drawings and paintings by her. This led to her production of more decorative pieces, such as the Manila or Adonis palm, *Veitchia merrillii* (No. 20), the flowering branch of the African-Tulip tree, *Spathodea campanulata* (No. 14), the fruiting branch of Formosan Firethorn, *Pyracantha koidzumii* (No. 35), and of the Panama-hat plant, *Carludovica palmata* (No. 52). This interest was fostered in Florida by her one-man show at the Fairchild Tropical Garden in 1966, and subsequently in Manila by her exhibition at the Philippine Orchid Society in 1969, in Bangkok at the Thailand Orchid Society the same year, and in Sydney, Australia at the 6th World Orchid Conference. She was awarded a Bronze Medal Certificate by the American Orchid Society at the Gainesville Orchid Society exhibition in November 1970.

Marion Sheehan's career may be considered to be only at its mid-point, but rarely does one's work pattern, one's expression of drive and ambition, change markedly in midstream. It is reasonable to believe that further growth and expansion of her talents and skills will be reflected in her future productions.

Until now, the greatest demand for her work has been for botanically accurate and aesthetically attractive pen and ink illustrations. This is conditioned in large measure by the economics of publishing, for fine color work is exceedingly costly to reproduce. The many commissions completed to date have afforded full opportunity to acquire a mastery of black-and-white techniques achieved by few of her contemporaries. Her competency as a botanist in her own right, coupled with her skill as a draughtsman, account in large measure for an excellence that has been admired and acclaimed, here and abroad. For example, her illustrations of floral organography and other botanical features in Lawrence's *Introduction to Plant Taxonomy* (1955) have been reproduced in no less than a dozen other works. While drawing provides less scope for artistic expression than painting, nonetheless the high quality of her pen and ink renderings sets them apart in a class by themselves. When her pen and ink work of recent years is compared with her early illustrations of *Rubus* and *Cucurbita*, her emergence as a skillful professional is the more evident. If a prediction for the future is to be made, it is that her mastery of present skills with pen and ink will be maintained, and that the greatest challenge will be to achieve a comparable plateau of excellence with the more decorative floral arts, and especially as executed in water color. Marion Ruff Sheehan has already made her mark as an outstanding botanical illustrator. It is in the years ahead that she will make her mark also as a botanical artist.

George H. M. Lawrence

This exhibition has been made possible through the generous cooperation of the artist, who made her work available, supplied biographical information, and copies of many of the published works bearing her illustrations.

Acknowledgment is also made to the L. H. Bailey Hortorium for loan of the item nos. 3-6, 8, 9, 65, 69, 71, and 72.

Item nos. 10, 11, 20, 22, 23, 37, 38, 50, 51, and 61 are in this Library's permanent collection.

CATALOGUE LISTING

Note: Dimensions are cited, height first, then width. They refer to mat openings, except as noted.



No. 1

1. Day-Lilies [*Hemerocallis* hybrids]
Water color. 22 3/4" X 17 1/2".
2. Day-Lilies [*Hemerocallis* hybrids]
Water color. 22 1/2" X 17 1/2".
3. Amaryllis family [*Amaryllidaceae*]. Plate prepared for a projected revision of L. H. Bailey's *Standard Cyclopedia of Horticulture*.
 - A. Spider-Lily [*Hymenocallis calathina*]
 - B. [*Allium beesianum*]
 - C. Guernsey-Lily [*Nerine sarniensis*]
 - D. Aztec-Lily [*Sprekelia formosissima*]
 - E. [*Cyrtanthus obliquus*]
 - F. Giant Snowdrop [*Galanthus elwesii*]
 - G. Autumn-Crocus [*Sternbergia lutea*]
 - H. [*Haemanthus albiflos*]
Water color. 19 1/4" X 14".

4. Succulent plants. Plate prepared for a projected revision of L. H. Bailey's *Standard Cyclopedia of Horticulture*.

- A. [Agave victoria-reginae]
- B. [Senecio haworthii]
- C. Crown-of-Thorns [Euphorbia milii]
- D. [Talinum guadalupense]
- E. Tiger-Jaws [Faucaria tigrina]
- F. [Senecio crassissimus]
- G. [Trichodiadema sp.]
- H. Flowering Stones [Lithops sp.]
- I. [Euphorbia obesa]
- J. Carrion-Flower [Stapelia variegata]
- K. Baby-Toes [Frithia pulchra]
- L. [Haworthia sp.]

Water color. 19 1/4" X 14 1/4".

5. Cactus family [Cactaceae]. Plate prepared for a projected revision of L.H. Bailey's *Standard Cyclopedia of Horticulture*.

- A. [Pereskia sp.]
- B. Old-Man Cactus [Cephalocereus senilis]
- C. Moon Cereus [Selenicereus sp.]
- D. Bunny-Ears [Opuntia microdasys]
- E. [Rhipsalis monocantha]
- F. Christmas-Cactus [Zygocactus hybrid]
- G. Bishop-Hood [Astrophytum myriostigma]
- H. [Coryphantha sp.]



- I. [Lobivia sp.]
 - J. [Echinofossulocactus sp.]
 - K. [Ariocarpus sp.]
 - L. [Dolichothele sp.]
- Water color. 20" X 14".

No. 5

6. Foliage types of Arum family [Araceae]. Plate prepared for a projected revision of L. H. Bailey's *Standard Cyclopedia of Horticulture*.

- A. Chinese Evergreen [Aglaonema commutata]
 - B. Dumbcane [Dieffenbachia baueri]
 - C. [Philodendron micans]
 - D. Caladium [Caladium bicolor]
 - E. [Alocasia chautrieri]
 - F. [Philodendron hastatum]
 - G. [Philodendron squamiferum]
- Water color. 19 3/4" X 13".

7. Frangipani [Plumeria rubra]
Water color. 21 1/4" X 23 1/4".

8. Iris family [Iridaceae]
Pastel and opaque water color. 27 1/2" X 21 1/2".
(Classroom poster for taxonomy course.)

9. Mint family [Labiatae]
Pastel and opaque water color. 27 1/2" X 21 1/2".
(Classroom poster for taxonomy course.)

10. Gesneriads.
Water color. 14 1/4" X 9 1/8".

11. Gesneriads.
Water color. 14 1/4" X 9 1/8".

12. Banana [Musa rosacea]
Water color. 22" X 12".

13. Papaya [Carica papaya]
Water color.
22" X 13 1/2".

14. African-Tulip tree
[Spathodea campanulata]
Water color.
26 3/4" X 21 1/2".



No. 7

15. Soursop, Guanabara [*Annona muricata*]
Water color. 13 3/4" X 9 3/4".
16. [*Stictocardia campanulata*]
Water color. 13 3/4" X 9 3/4".
17. Balsa [*Ochroma pyramidale*]
Water color. 27" X 20 1/2".
18. Cotton-Rose, Confederate-Rose [*Hibiscus mutabilis*]
Water color. 20 1/2" X 14 1/8".
19. Fish-tail Palm [*Caryota mitis*]
Water color. 27 3/4" X 21 1/2".
20. Manila or Adonis Palm [*Veitchia merrillii*]
Water color. 27 1/2" X 21 5/8".
21. Thatch Palm [*Thrinax parviflora*]
Water color. 28" X 21".
22. Madagascar Palm [*Chrysalidocarpus lutescens*]
Water color. 28 3/8" X 22".
23. Egyptian Doum or Gingerbread Palm [*Hyphaene thebaica*]
Water color. 28 3/8" X 22 1/4".
24. [*Mucuna bennettii*]
Water color. 21 3/4" X 13 1/4".



No. 23

25. Elephants-Ear [*Alocasia* sp.]
Water color. 27 1/2" X 21".
26. Rose-of-China [*Hibiscus rosa-sinensis*] (Yellow hybrid)
Water color. 13 1/2" X 10 1/4".
27. Rose-of-China [*Hibiscus rosa-sinensis*] (Pink hybrid)
Water color. 13 1/2" X 10 1/4".
28. Breadfruit [*Artocarpus altilis*]
Water color. 25 1/2" X 21".



No. 28

29. French-Mulberry [*Callicarpa americana*]
Water color. 20 1/4" X 13 1/4".
30. Heralds-Trumpet [*Beaumontia grandiflora*]
Water color. 16" X 19 3/4".
31. Wild Passion-Flower, Maypop [*Passiflora incarnata*]
Water color. 15" X 21".
32. Cape-Jasmine [*Gardenia jasminoides*] (Double-flowered)
Water color. 20 3/4" X 13 3/4".
33. Trumpet-Creeper [*Tecomathe dendrophila*]
Water color. 22" X 17".
34. Glory-Lily [*Gloriosa rothschildiana*] with Peach-faced Love Bird
Water color. 19 1/4" X 13 3/4".



No. 39

42. Star Morning-Glory [*Quamoclit coccinea*]
Water color. 5" X 4".

43. American-Lotus [*Nelumbo lutea*]
Water color. 4 1/2" X 3 5/8".

44. Leaf with plant aphids
Water color. 3 1/2" X 3 1/8".

45. Orchid hybrid [*X Brassocattleya*]
Water color. 6 3/8" X 5 3/8".

46. Scarlet Gilia [*Ipomopsis rubra*]
Water color. 13 3/8" X 6 1/4".

47. Lantana [*Lantana camara*]
Water color. 4 1/2" X 3 5/8".

48. Madagascar Periwinkle [*Catharanthus roseus*]
Water color. 4 1/2" X 3 5/8".

49. Nagami Kumquat [*Fortunella margarita*]
Water color. 5 5/8" X 8".

50. Bull Bay [*Magnolia grandiflora*] in fruit
Water color. 27 3/4" X 21 1/4".

No.
42



No.
47



35. Formosan Firethorn [*Pyracantha koidzumii*] with Mockingbird
Water color. 23" X 17".
36. Holly [*Ilex rotunda*] with Cedar waxwing
Water color. 23 3/4" X 17".
37. Camellia 'Pink Queen' [*Camellia reticulata* cv.]
Water color. 12 1/4" X 10 1/2".
38. Camellia [*Camellia japonica*]
Water color. 13 1/4" X 10".
39. Jade-Vine [*Strongylodon macrobotrys*]
Water color. 27 1/2" X 13 1/2".
40. Hawaiian fruits on Breadfruit leaf (Coconut, Banana, Mango, Papaya, Breadfruit)
Water color. 16 1/4" X 20".
41. Tropical plants
Water color. 19" X 28 1/4".
(Reproduced on book jacket for *Florida Landscape Plants Native and Exotic*, by John V. Watkins, Gainesville, 1969.)



No. 51

51. Bull Bay [*Magnolia grandiflora*] in flower
Water color. 27 3/4" X 21 1/4".

52. Panama Hat plant [*Carludovica palmata*]
Water color. 21" X 13 1/2".

53. Eight Orchid paintings for a series entitled Orchid Genera, illustrated by Tom and Marion Sheehan, appearing in *American Orchid Society Bulletin*
- A. Zygopetalum [*Zygopetalum mackayi*]
 - B. Angraecum [*Angraecum sesquipedale*]
 - C. Vanilla [*Vanilla planifolia*]
 - D. Maxillaria [*Maxillaria cucullata*]
 - E. Sophronitis [*Sophronitis cernua*]
 - F. Nun's Orchid [*Phaius tankervillei*]
 - G. Foxtail Orchid [*Rhynchostylis gigantea*]
 - H. Christmas Cattleya [*Cattleya percivaliana*]
- All water colors. All 16 1/8" X 10 1/4".

54. Ringworm Cassia or Candle-Bush [*Cassia alata*]
Pen and ink. 13" X 9".

55. Flowering Dogwood [*Cornus florida*]
Pen and ink, brush and ink wash. 13" X 9".

56. Common Catalpa [*Catalpa bignonioides*]
Pen and ink. 13" X 9".



No. 53D

*Displayed in
first floor lobby.



No. 58

57. Bull Bay [*Magnolia grandiflora*]
Pen and ink, brush and ink wash.
13" X 9".
58. Cannon-Ball Tree [*Couroupita guianensis*]
Pen and ink. 13" X 9".
59. Nine drawings to illustrate individual families of plants for *Manual of Cultivated Plants*, New Ed., by L.H. Bailey (New York, 1949)
 - A. Palm family [*Palmae*]
Pen and ink. 14" X 9".
 - B. Composite family [*Compositae*]
Pen and ink. 11 1/2" X 9".
 - C. Arum family [*Araceae*]
Pen and ink. 11 1/2" X 9".
 - D. Iris family [*Iridaceae*]
Pen and ink. 11 1/2" X 9".
 - E. Pine family [*Pinaceae*]
Pen and ink. 14" X 9".
 - F. Grasses [*Gramineae*]*
Pen and ink. 14 1/2" X 9 1/4".
 - G. Pea family [*Leguminosae*]*
Pen and ink. 14 1/4" X 9 1/4".
 - H. Cactus family [*Cactaceae*]*
Pen and ink. 7 3/4" X 9 1/4".
 - I. Parsley or Carrot family [*Umbelliferae*]*
Pen and ink. 11 1/2" X 9 1/4".



No. 59E



No. 60C

60. Three drawings for *You Can Grow Cattleya Orchids*, by Mary Noble (1968)
 - A. Flower pests and their damage
 - B. Root pests and their damage
 - C. Green part pests and their damageAll pen and ink, brush and ink wash. All 15" X 9 5/8".
61. Six drawings of tropical foliage plants for a series entitled *Your Plant File*, by Tom Sheehan appearing in *Florists' Review*
 - A. *Beaucarnea* [*Beaucarnea recurvata*]
Scratchboard. 7 1/2" X 9 1/2".
(August 25, 1960)
 - B. Cliffbrake Fern [*Pellaea rotundifolia*]
Scratchboard. 7 1/4" X 9 1/4".
(August 7, 1958)
 - C. *Peperomia* [*Peperomia caperata*]
Scratchboard. 9 1/4" X 7 1/4".
(July 24, 1958)
 - D. Fiddleleaf Fig [*Ficus lyrata*]
Scratchboard. 10 1/2" X 8 1/2".
(February 7, 1957)
 - E. [*Alocasia chautrieri*]*
Scratchboard. 10" X 8".
(March 28, 1957)
 - F. *Philodendron* [*Philodendron florida*]*
Scratchboard. 10" X 8".
(February 14, 1957)
62. Spiral Ginger [*Costus speciosus*]
Water color. 18 1/2" X 14".
63. [*Medinilla magnifica*]
Water color. 27 1/2" X 20".
64. Vanda Orchid [*Vanda hybrid*]
Water color. 21" X 14".
65. Seven drawings for *Taxonomy of Vascular Plants*, by George H. M. Lawrence (New York, 1951)
 - A. Leaf or petal bases and apices
Pen and ink. 4" X 9".
 - B. *Elaeocarpus* family [*Elaeocarpaceae*]
Pen and ink. 3" X 9".
 - C. *Dillenia* family [*Dilleniaceae*]
Pen and ink. 8" X 9".



No. 61A

*Displayed in
first floor lobby.

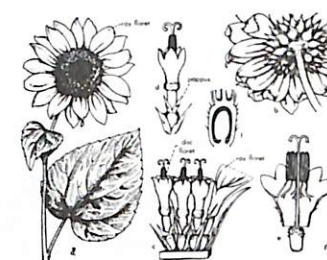
- D. Flower types and arrangement
Pen and ink. 8" X 9".
- E. Amaryllis family [Amaryllidaceae]
Pen and ink. 7 1/4" X 9".
- F. Primrose family [Primulaceae]
Pen and ink. 11" X 9".
- G. Lily family [Liliaceae]
Pen and ink. 6" X 9".

- 66. Wormia [Wormia burbridgei]
Water color. 16" X 14 7/8".
- 67. Tung-Oil Tree [Aleurites fordii]
Water color. 27 3/8" X 20 3/4".
- 68. Torch Ginger [Nicotiana glauca]
Water color. 19 1/2" X 13 7/8".
- 69. Eight drawings for *An Introduction to Plant Taxonomy*, by
George H. M. Lawrence (New York, 1955)
 - A. Gymnosperms [Gymnospermae]
Pen and ink. 12" X 9".
 - B. Japanese Maple [Acer palmatum]
Pen and ink. 4" X 9".
 - C. Rose family [Rosaceae]
Pen and ink. 9 1/4" X 9".



No. 68

- D. Composite family [Compositae]
Pen and ink. 7" X 9".
- E. Orchid family [Orchidaceae]
Pen and ink. 7" X 9".
- F. Surface types
Pen and ink. 4" X 9".
- G. Ferns [Filicinae]
Pen and ink. 12" X 9".
- H. Mustard family [Cruciferae]*
Pen and ink. 7" X 9".



- 70. Ten drawings for *Florida Landscape Plants Native and Exotic*, by John V. Watkins (Gainesville, 1969)
 - A. American Holly [Ilex opaca]. 7 cultivars
Pen and ink. 16" X 10".
 - B. Large-leaf Figs [Ficus spp.]. 7 species
Scratch board. 16" X 10".
 - C. Hibiscus hybrids [Hibiscus hybrids]
Pen and ink. 12" X 9".
 - D. Yatay or Jelly Palm [Butia capitata]
Pen and ink. 6" X 6". (Sheet size)
 - E. Orange-Jasmine [Murraya paniculata]
Pen and ink. 6" X 6". (Sheet size)
 - F. Golden-Shower Tree [Cassia fistula]
Pen and ink. 6" X 6". (Sheet size)

*Displayed in first floor lobby.



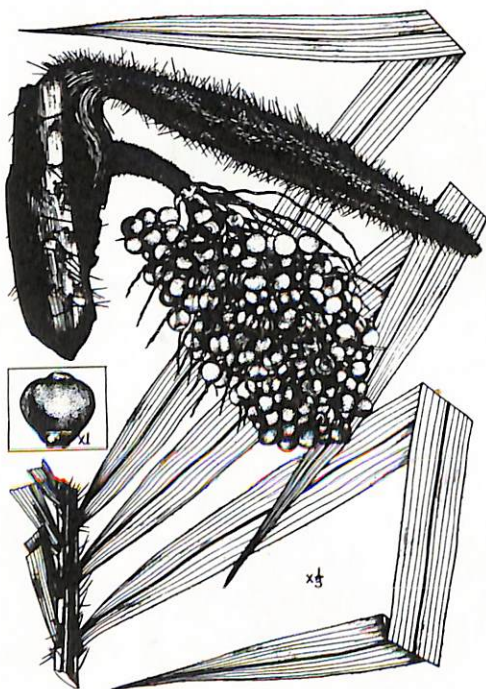
No. 70B



No. 70C

- G. Cajeput Tree [*Melaleuca leucadendra*]
Pen and ink. 6" X 6". (Sheet)
- H. Fish-Tail Palm [*Caryota mitis*]
Pen and ink. 6" X 6". (Sheet)
- I. Penguin [*Bromelia pinguin*]
Pen and ink. 6" X 6". (Sheet)
- J. Bowstring-Hemp [*Sansevieria* spp.]
Pen and ink. 6" X 6". (Sheet)

71. Five drawings for articles appearing in *Gentes Herbarum*
- A. Palm [*Bactris cuesa*]
Pen and ink. 19 3/4" X 13 1/2".
(L.H. Bailey, *Indigenous Palms of Trinidad-Tobago*)
 - B. Palm [*Bactris obovoidea*]
Pen and ink. 19 3/4" X 13 1/2".
(L.H. Bailey, *Indigenous Palms of Trinidad-Tobago*)
 - C. Gourd [*Cucurbita moorei*]
Pen and ink. 12 3/4" X 8 3/4".
(L.H. Bailey, *Jottings in the Cucurbitas*)
 - D. Bramble [*Rubus dives*]
Pen and ink. 13" X 9".
(L.H. Bailey, *Rubus studies - Review and additions*)
 - E. Iriartella Palm [*Iriartella ferreyrae*]*
Pen and ink. 20" X 14 3/8".
(Harold E. Moore, Jr., *Iriartella* H. Wendland emended)



No. 71A

*Displayed in
first floor lobby.



No. 71D

72. Six unpublished drawings prepared for a projected revision of L. H. Bailey's *Standard Cyclopaedia of Horticulture*
- A. Mariposa Lily [*Calochortus barbatus*] and [*C. vestae*]
Pen and ink. 4 1/2" X 10".
 - B. Androstephium [*Androstephium caeruleum*]
Pen and ink. 4 1/2" X 5".
 - C. Star Begonia [*Begonia heracleifolia*]
Pen and ink. 6" X 6".
 - D. Shell-Ginger [*Alpinia nutans*]
Pen and ink. 5" X 6".
 - E. Radermachera [*Radermachera pentandra*]
Pen and ink. 4 1/2" X 10".
 - F. Climbing fumitory [*Adlumia fungosa*]
Pen and ink. 5" X 6".



No. 70G



No. 70D



No. 70F

- Anon. - *Buying your Christmas tree*. Washington, D.C., U.S. Government Printing Office, 1969.
- _____ - *A guide to medicinal plants of Appalachia*. U.S. Dept. Agric. Circ. Washington, D.C., U.S. Government Printing Office, 1969. 63 figs.
- Bailey, Liberty Hyde - *Indigenous palms of Trinidad and Tobago*. *Gentes Herb.* 7: 352-445. 1947. Figs. 159, 160, 162-164, 167-168, 170-171, 189.
- _____ - *Jottings in Cucurbita*. *Gentes Herb.* 7: 448-477. 1948. Figs. 223, 228, 235.
- _____ - *Manual of cultivated plants, most commonly grown in the continental United States and Canada*. Rev. ed. New York, The Macmillan Co., 1947. 102 (of 195) figs.
- _____ - *Palms uncertain and new*. *Gentes Herb.* 8: 92-205. 1949. Figs. 5-11, 13, 17, 19, 21, 23, 25-32, 34-36, 39, 58-61, 65-79, 82-87.
- _____ - *Rubus studies, reviews and additions*. *Gentes Herb.* 7: 480-526. 1949. Figs. 240, 242-248, 250-254, 256, 262.
- Brogdon, James E. & Lawrence, Fred P. - *Insects and mites of Florida citrus*. *Florida Agric. Extens. Serv. Circ.* No. 1373. Gainesville, 1966.
- Conover, Charles A. & Sheehan, Thomas J. - *Anemone flower production in Florida*. *Florida Agric. Extens. Serv. Circ.* No. 293. Gainesville, 1966. 3 pp., 2 figs.
- _____ & _____ - *Daylilies*. *Florida Agric. Extens. Serv. Circ.* No. 304. Gainesville, 1966. 5 pp., 2 figs.
- Cowan, Richard S. - *Correct name of the powder-puff tree*. *Baileya* 11: 94-98. 1963. Fig. 10.
- Cullen, James - *The genus Papaver in cultivation*. 1, *The wild species*. *Baileya* 16: 73-91. 1969. Fig. 1.
- _____ - *Notes on the cultivated species of Glaucium and Dicranostigma [Papaveraceae]*. *Baileya* 15: 112-117. 1967. Figs. 1-2.
- Dress, William J. - *Anemarrhena asphodeloides (Liliaceae)*. *Baileya* 13: 135-136. 1965. Fig. 36.
- _____ - *Gaura lindheimeri* Engelmann and Gray. *Baileya* 7: 62. 1959. Fig. 17.

- Heller, C.A. - *Edible and poisonous plants of Alaska*. Rev. ed. College, Alaska, Univ. of Alaska, Cooperative Extension Service, 1958. (Extension Bull. F-40.)
- Ingram, John W. - *Nomenclatural observations on miscellaneous Aizoaceae*. II. *Baileya* 17: 45-50. 1970. Fig. 1.
- _____ - *Notes on the cultivated Liliaceae*. 1, *Asphodeline* and *Asphodelus*. *Baileya* 12: 1-10. 1964. Figs. 1, 4.
- _____ - *Notes on the cultivated Primulaceae*. 2, *Dodecatheon*. *Baileya* 11: 69-90. 1963. Fig. 6.
- _____ - *Studies in the cultivated Boraginaceae*. 4, *A key to the genera*. *Baileya* 9: 1-12. 1961. Figs. 1-2, 4-5, 7-9.
- _____ - *Studies in the cultivated Ericaceae*. I, *Leucothoe*. *Baileya* 9: 57-66. 1961. Fig. 23.
- Lawrence, George H.M. - *Aspidistra elatior*. *Baileya* 3: 190. 1955. Fig. 62.
- _____ - *Blumenbachia hieronymi*. *Baileya* 3: 176. 1955. Fig. 58.
- _____ - *Crete Dittany (Amaracus dictamnus) and its relationships*. *Baileya* 2: 30-31. 1954. Figs. 10-11.
- _____ - *Eranthis hyemalis and Eranthis X tubergenii*. *Baileya* 8: 18-19. 1960. Fig. 5.
- _____ - *Introduction to plant taxonomy*. New York, The Macmillan Co., 1955. 72 figs.
- _____ - *The rock-lily (Arthropodium cirrhatum)*. *Baileya* 1: 42-43. 1953. Fig. 34.
- _____ - *Taxonomy of vascular plants*. New York, The Macmillan Co., 1951. 114 (or 322) figs.
- _____ - *Vinca and Catharanthus*. *Baileya* 7: 113-119. 1959. Fig. 37.
- McElwee, E. W. - *Growing Camellias in Florida*. *Florida Agric. Extens. Serv. Circ.* No. 161. Gainesville, 1955. 40 pp. 4 figs.
- Moore, Harold E., Jr. - *African violets, gloxinias, and their relatives*. *A guide to the cultivated gesneriads*. New York, The Macmillan Co., 1957. 323 pp., 50 figs., 5 col. pls.
- _____ - *Clinosperma*. *Gentes Herb.* 8: 244-245. 1951. Fig. 101.
- _____ - *The correct name for the Torch-ginger*. *Baileya* 10: 121. 1962. Fig. 41.
- _____ - *Exotic palms in the western world*. *Gentes Herb.* 8: 295-315. 1953. Figs. 111, 116-117.
- _____ - *The genus Milla and its allies*. *Gentes Herb.* 8: 262-294. 1953. Fig. 108.

- _____ - *Iriartella* H. Wendland emended. *Gentes Herb.* 9: 275-285. 1963. Fig. 197.
- _____ - *Neonicholsonia* vs. *Woodsonia*. *Gentes Herb.* 8: 239-243. 1951. Fig. 99.
- _____ - Notes on new world gerania. *Gentes Herb.* 8: 250-257. 1951. Figs. 102-103.
- _____ - *Petronymphe*, a new genus of Amaryllidaceae. *Gentes Herb.* 8: 258-260. 1951. Fig. 104.
- _____ - Some American Corypheeae. *Gentes Herb.* 8: 208-222. 1951. Fig. 90.
- _____ - Synopses of various genera of Arecoideae. *Gentes Herb.* 8: 480-576. 1957. Figs. 157-159.
- _____ - Various new palms. *Gentes Herb.* 8: 223-238. 1951. Figs. 91-93, 95-98.
- Moore, Harold E., Jr. & Hyypio, Peter A. - Some comments on *Strelitzia* (Strelitziaceae). *Baileya* 17: 64-74. 1970. Fig. 1.
- Noble, Mary - *You can garden in Florida*. Jacksonville, [Privately printed], 1963. 148 pp. Many figs., 19 by M.R.S.
- _____ - *You can grow cattleya orchids*. Jacksonville, [Privately published], 1968. 148 pp. Many figs., 16 by M.R.S.
- _____ - *You can grow orchids*. Ed. 3, rev. Jacksonville [Privately published], 1964. 152 pp. Many figs., 3 by M.R.S.
- Sheehan, Thomas J. - Basic botany for orchids. *Florida Orchidist* 8: 19-24. 1925. 2 figs.
- _____ - Orchids for the beginner. *Florida Orchidist* 11: 25-28. 1968. 7 figs.
- _____ - Your plant file. *Florists' Review* (an irregular editorial column). 1957-1962.
- _____ - Zingiberaceae for Florida. *Proc. Florida State Hort. Soc.* 71: 382-388. 1958. 12 figs.
- Sheehan, Thomas J. & Conover, Charles A. - Bromeliads. *Florida Agric. Extens. Serv. Circ.* No. 300. Gainesville, 1966. 6 pp., 2 figs.
- Sheehan, Thomas J. & Dickey, Ralph D. - Poinsettia culture. *Florida Agric. Extens. Serv. Circ.* No. 172. Gainesville, 1957. Revised, Circ. No. 172A, 1960. 6 pp., 3 figs.
- Sheehan, Thomas J., Joiner, Jasper N. & Cowart, J. K. - Absorption of p^{32} by *Cattleya* 'Trimos' from foliar and root applications. *Proc. Florida State Hort. Soc.* 80: 400-404. 1967. 3 figs.

- Sheehan, Thomas J., Miller, Howard N. & Kerr, Stratton H. - *Amaryllis*. *Florida Agric. Extens. Serv. Circ.* No. 171. Gainesville, 1957. Revised, Circ. No. 171A, 1960. 8 pp., numerous figs.
- Sheehan, Thomas J. & Rose, Sylvester A. - Garden chrysanthemums. *Florida Agric. Extens. Serv. Circ.* No. 182. Gainesville, 1958. Revised, Circ. Nos. 182A, 182B, 1966. 8 pp., 2 figs.
- Sheehan, Thomas J. & Sheehan, Marion R. - Orchid genera, illustrated. I, (*Cattleya*). *Amer. Orchid Soc. Bull.* 36: 706-708; II, (*Laelia*). *Op. cit.* 902-903; III, (*Rodriguezia*). *Op. cit.* 1096-1097. 1967. IV, (*Broughtonia*). *Op. cit.* 37: 102-103; V, (*Phaius*). *Op. cit.* 206-207; VI, (*Maxillaria*). *Op. cit.* 388-389; VII, (*Schomburgkia*). *Op. cit.* 580-581. 1968. VIII, (*Oncidium*). *Op. cit.* 38: 240-241; IX, (*Rhynchostylis*). *Op. cit.* 386-387; X, (*Brassia*). *Op. cit.* 784-785; XI, (*Epidendrum*). *Op. cit.* 876-877; XII, (*Vanda*). *Op. cit.* 968-969; XIII, (*Peristeria*). *Op. cit.* 1070-1071. 1969. XIV, (*Brassavola*). *Op. cit.* 39: 318-319; XV, (*Sopromitis*). *Op. cit.* 428-429; XVI, (*Phalaenopsis*). *Op. cit.* 606-607; XVII, (*Zygopetalum*). *Op. cit.* 808-809; XVIII, (*Angraecum*). *Op. cit.* 1000-1001. 1970. XIX, (*Vanilla*). *Op. cit.* 40: 56-57; XX, (*Gongora*). *Op. cit.* 224-245. 1971. 20 col. pls. The series is continuing.
- Watkins, John V. - *Florida landscape plants, native and exotic*. Gainesville, Univ. of Florida Press, 1970. 368 pp. Many figs., 181 by M.R.S.
- _____ - *Your guide to Florida landscape plants*. 2 vols. Gainesville, Univ. of Florida Press, 1963. Most of the figs. by M.R.S.



