

Catalogue of an Exhibition  
of  
Contemporary Botanical Art and Illustration  
6 April to 1 September 1964

HUNT BOTANICAL LIBRARY  
CARNEGIE INSTITUTE OF TECHNOLOGY  
PITTSBURGH, PENNSYLVANIA



Catalogue of an Exhibition  
of  
Contemporary Botanical Art and Illustration  
6 April to 1 September 1964

HUNT BOTANICAL LIBRARY  
CARNEGIE INSTITUTE OF TECHNOLOGY  
PITTSBURGH, PENNSYLVANIA



Contemporary Botanical Art  
at the Hunt Botanical Library

For nearly fifty years Rachel McMasters Miller Hunt, whose collections of botanical and horticultural literature comprise this library, collected also examples of the work of botanical artists -- both originals and reproductions. Her interests were primarily in the yester-years, in works produced mainly before 1850. Her collection expresses tastes that were discriminating and perceptive, and shows, more often than not, works of art rather than of illustration. These were exemplified in an exhibition held here a year ago, when there was shown a small but important segment of her collection -- the paintings, drawings, engravings, reproductions, and letters from the hand of Pierre-Joseph Redouté, the renown Belgian artist whose productive career was based in and around Paris. This exhibition, together with a biographical study of the artist by F. A. Stafleu, was the subject of A Catalogue of Redoutéana, an illustrated volume then published by the library in Mrs. Hunt's memory.

Now, one year later, there is presented here the library's more recently acquired holdings of original work by botanical artists and illustrators of the mid-twentieth century. This exhibition provides abundant evidence of present-day vitality among botanical artists, and points to the number of persons for whom the production of such work is a profession.

This library, already a repository for botanical art of earlier centuries, recognizes that among the original work produced today there is much that will be sought and prized by collectors tomorrow. It is the policy of this library to establish here a repository of contemporary original botanical art and illustration in any medium and from all sources. There exists here the objective to preserve for posterity -- either as library property or as materials on loan -- examples of the original paintings and drawings of those contemporary artists whose work is known to have been published in one form or another. This is believed to be an innovation for a library of botanical literature. It is undertaken with the conviction that if not done now much of this material may not otherwise be preserved for enjoyment and study in the decades and centuries of the future. It recognizes the importance of preserving these materials as a part of our present culture and our future archival record.

To avoid entangling restrictions, broad definitions guide this library when deciding what is contemporary, what comprises publication, and what is botanical art or illustration. This is considered necessary, lest something now be excluded that later may be

recognized as important. Contemporary work is defined as that which has been executed in the twentieth century. A work is considered to be original when it is the handwork of the artist. It is usually a drawing or a painting, but it may also be an engraving, etching, lithograph, or serigraph (silk-screen print).

In a few instances, all or a majority of the original paintings of an artist are the property of the commissioning agency which retains custodianship. This is true, for example, of most of the work by Cythna Letty of South Africa, of Lilian Snelling late of the Royal Botanic Garden, Edinburgh, and of the Royal Horticultural Society, London, and to an appreciable extent the water colors of Stella-Ross-Craig of the Royal Botanic Garden, Kew. In such instances this library has, on occasion, commissioned the artist to execute a second painting (an artist's copy) of one or more of the published subjects, thus providing an original example at this library. This has been done for us, for example, by Miss Letty, by Mrs. Mary Foley Benson, and by Mrs. Jeanne Janish.

Publication is considered a fact if some work by the artist -- and not necessarily that preserved in this library or accounted in this catalogue -- has been reproduced in one form or another and distributed in some degree. The work of Joseph Domjan, for example, is represented primarily by color woodcuts -- each painstakingly produced by hand and signed in limited edition -- but his work is also published on postcards, such as those available from the Metropolitan Museum of Art in New York, and is to be seen in a few published volumes. The paintings of Ethelynde Smith are executed primarily for the collector, but some have been used for wall-paper designs, and others have been reproduced for bridge-tally cards, greeting cards, and note papers. The paintings by Emily Sartain and Henry R. Mockel enjoy similar publication format. Ralph E. Griswold, known internationally as a landscape architect, indulges occasionally in botanical art as an avocation, and his lithographs are prized by all who possess them. Edmond Amateis is best known as a sculptor and medalist, but his intimate knowledge of the species of rhododendrons and azaleas made him the logical choice to illustrate a recent monograph of the genus.

For an item to be considered one of botanical art or illustration, it is required on the one hand that the work be representational, and on the other that the plant or plant parts depicted be identifiable -- at least as to family or genus (some included items, clearly botanical and exemplifying high artistic proficiency, such as considerably enlarged floral details or anatomical structures, may not of themselves be so identifiable). It is required also that it represent more originality than is to be found in a piece of mechanical draftsmanship. No attempt has been made when accepting materials for this collection to evaluate the merits of the work. This is not the function of the archivist. Nor has consideration been given to distinguishing whether the work is purely an art form or an illustration of scientific significance. Until now, little attention has been given by this library to original photographic work of artistic or scientific merit, largely because such work is represented and preserved elsewhere. An

exception is the inclusion in this exhibition of the somewhat exotic radiograph prints of floral subjects by A. G. Richards and H. F. Sherwood.

This exhibition is presented, and this catalogue made available, for many reasons. It is believed important that all concerned be made more aware of contemporary activities in the field of botanical art. There is little doubt that the work of some of the artists presented here will be as much sought for by future generations of collectors, as is that of Redouté, Bessa, Robert, and others. It is important that students of these arts, and those of the graphic arts, know that such a collection exists, that it is being developed, and that these materials are available for examination and study. Such a collection provides examples in a wide range of intrinsic quality and of art media, for comparative studies of technique, of modes of representation, and of publication potentials. In the many instances, where the original work and its published reproduction can be compared with one another, the graphic arts student and others may fairly evaluate the quality of the reproduction or the suitability of the process chosen for the particular work.

In addition to the external usefulness of this collection, this exhibition serves also to bring to the attention of artist, illustrator, author, publisher, and private collector the role of this library in the preservation of these materials. There is great pedagogical merit in bringing together in one place the examples of as many artists as possible. It is held to be necessary that there also be a central repository for tomorrow's archival record. If it is to assume importance, this collection must be expanded far beyond its present, and limited, representation. For the present it is to be viewed as a pilot operation.

Persons who consult this catalogue, and who have knowledge of the modern literature of horticulture and botany, may know of artists and illustrators whose work is conspicuous by its absence. This omission reflects neither deliberate nor inadvertent exclusion. It means only that no examples of such work have been obtained. Advice is invited on the identity of eligible artists and illustrators whose work is not represented and here reported. Institutions possessing original drawings of botanical subjects are invited to deposit them in these archives, on loan or other basis, so that they may be catalogued as a part of the existing record, and so that for now and for the future they may thus serve a more useful purpose.

Numerous unpublished paintings and drawings have been placed in this collection by the artist, who has retained a lifetime exhibition and publication right. Acquisitions with such arrangements are commonplace and are encouraged. Likewise, the private collector is invited to consider these facilities, with all the protective features they embody, together with this program to establish here one of the finest of botanical art repositories, when deciding the final disposition of his holdings. Here, at this library, such paintings serve both education and research; they are properly preserved and curated, and they are the working tools of the student and scholar.

A biographical record of botanical artists and illustrators, past and present, is an integral part of any collection of their work. At this library the biographical data, with a photograph of the artist whenever possible, is required from the artist whose work is accepted. Plans are now under way to expand this coverage to those whose work is known but not represented. The importance of this record is not to be minimized. In this library's bibliographic studies of horticultural and botanical works of earlier periods, one of the areas for which too little information can be found is that concerning the identities, lives, and activities of artists and engravers whose works illustrate the printed texts of the past. Many times only the name of the artist or engraver is known; lacking are the dates of birth and death, and information about other activities. This is equally true for the artists and illustrators of today. Unless prompt corrective measures are taken, their role in the future heritage of today's literature will be as little known as is that of so many of their predecessors. Botanical artists and illustrators not represented in this exhibition, but learning of this central repository and documentation record, are urged to provide this library with a biographical account of themselves. Forms for the purpose will be supplied on request.

#### Acknowledgements

The works displayed in this exhibition, and accounted in this Catalogue, are under the custodianship of John V. Brindle, Curator of Prints and Exhibits at this library. The preparation of the display has been his responsibility. He has given me great assistance in planning this Catalogue and has prepared much of its copy. It is my pleasure and expression of indebtedness to acknowledge with gratitude the very considerable effort he has given over a period of many months to these details and to the entire production.

Many persons have directed my attention to the artists and illustrators whose work is included. This is particularly true for those of the Pacific Coast region of this country, where a very keen appreciation exists for the importance of botanical illustration. Among those who have been most helpful are Miss Annetta Carter (University of California, Los Angeles), Dr. Philip A. Munz (Rancho Santa Ana Botanic Garden, Clermont, Calif.), and Dr. William S. Stewart (Los Angeles State and County Arboretum, Arcadia, Calif.). To each I express my sincere thanks. Equal thanks are extended to Wilfrid Blunt (George A. Watts Gallery, Compton), and to John S. L. Gilmour (University Botanic Garden, Cambridge), both of England, for having assisted materially in the representation of the British artists whose work is here included. The productions of individual artists and illustrators have come to our attention from many other sources, and for all of this guidance and assistance we of the library's staff are most grateful.

Many of the artists concerned have contributed their work, thus assuring its preservation for posterity. Some have arranged for purchase at prices far below market values. Others have arranged for the presence of their work on varying types of loan arrangements. Without this kind of encouraging support, some of the finest pieces in the exhibi-



tion would have been denied us. Our gratitude for this assistance is freely acknowledged. Several institutions have generously loaned original drawings from their collections. In some instances the loan is of indefinite duration, in others for the period of this exhibition. The cooperation thus exemplified is here reported with deepest thanks.

George H. M. Lawrence

1 April 1964

## Explanatory Notes

The works in this exhibition are accounted alphabetically in this Catalogue by the name of the artist. Each item has its own sequence number.

Inasmuch as the subjects are primarily plant portraits, the Latin name of the plant is followed by the common name in parentheses. When a Latin name given by the artist on the original drawing differs from that now accepted for the plant, it is treated as a synonym and is enclosed by square brackets.

Items in the exhibition are matted. The size of mat opening or sheet is given in inches. The dimension of the height is followed by that of the width.

It is of interest to many persons to know if an item is signed or not, and if dated or not. These are reported. No distinction is made, however, between the artist's use of a monogram or initials, and of the full name. The date of the drawing is given when it appears on the original. If not dated, the known or approximate date is given in square brackets.

When the item is known to be the original used to illustrate some published account, this is noted by the introductory phrase -- "Reproduced in ..." The full citation of such works is given in the biographical account of the artist, on the same page.

ABBE, Elfriede Martha

- 1 Narcissus serotinus L. (Dwarf autumn-flowering Narcissus). Wood engraving. 12 3/8 x 8 7/8. Signed, undated [ca. 1962]. Reproduced in Abbe, E. The Plants of Virgil's Georgics.
- 2 Phragmites communis Trin. (Reed Grass). Data as for No. 1.
- 3 Arbutus unedo L. (Strawberry-Tree). Data as for No. 1.
- 4 Platanus orientalis L. (Oriental Plane-Tree). Data as for No. 1.
- 5 Aloysia triphylla (L'Hérit.) Britton [Lippia citriodora HBK] (Lemon Verbena). Wood engraving. 13 x 8 3/8. Signed, undated [ca. 1954]. Reproduced in Muenscher, W. C. & Rice, M. A. Garden Spice and Wild Pot-herbs. Ithaca, N.Y., Printed by Elfriede Abbe (limited edition), 1954. Republished by Cornell Univ. Press, 1955.
- 6 Salvia officinalis L. (Sage). Data as for No. 5, but 11 7/8 x 8 1/8.

Elfriede Martha Abbe. Born, Washington, D.C., 6 February 1919. B.F.A. Cornell Univ. 1940; studied at Art Institute Chicago, 1937; Syracuse University, 1947. Scientific illustrator, Cornell Univ. 1942 to date. Free-lance artist in sculpture and graphic arts (operates The Abbe Press) since 1949. Address: 24 Woodcrest Ave., Ithaca, New York.

Specialty: sculpture in wood and marble, wood engraving, fine printing illustrated with own woodcuts, botanical illustration.

Work published, from The Abbe Press:

Aesop's fables, 1950; Rip van Winkle, 1951; Prometheus bound, 1952; The Revelation of St. John the divine, 1958. From the Cornell University Press, The plants of Virgil's Georgics, 1964 (in press). Botanical illustrations in Clausen, R.T., Sedum of the Trans-Mexican belt, Ithaca, N.Y., 1959.

Work commissioned: statuary - "The Hunter" New York World's Fair, 1939; oak frieze - A. R. Mann Library, Cornell Univ., 1951; bust - Liberty Hyde Bailey, 1954. Several memorial bronze plaques.

Exhibitions: Cincinnati Art Museum, New Haven Paint and Clay Club, Olivet Nazarene College, San Diego Art Museum Syracuse Museum, and others.



## ADAMS, (Moulton) Lee

- 7 Petrea volubilis (Queen's wreath). Water color. 25 1/2 × 19 7/8. Signed, undated [1963].
- 8 Bougainvillea glabra. Water color. 24 5/8 × 18 7/8. Signed, undated [1963].

(Moulton) Lee Adams. Born, Jacksonville, Fla., 15 July 1922. B.A. (Biology) Rollins College, 1945; studied botany and zoology at Univ. of North Carolina, Free-lance botanical artist 1947 to date. Address: 4243 St. Johns Ave., Jacksonville 10, Fla.

Specialty: water colors of tropical plants, fruits, and flowers; murals.

Work published: Fifty wildflowers of Northeastern America. New York, Audubon Society; Portraits of tropical fruits. Jacksonville, Fla., 1954; Paintings by Lee Adams. Jacksonville, Fla., 1963.

Work commissioned: Fifty wildflowers ..., National Audubon Society; cover designs for Horticulture; fourteen portraits of palms, Fairchild Tropical Garden; two flower portraits, Hunt Botanical Library; eleven murals, New York World's Fair 1964; and scores of botanical portraits for individual clients.

Exhibitions: Horticultural Hall, Boston, Mass; Museum of Natural History, Buffalo, N.Y.; Fairchild Tropical Gardens, Coconut Grove, Fla.; Cornell University, Ithaca, N.Y.; Cummer Gallery of Art, Jacksonville, Fla.; International House, New Orleans, La.; Audubon House, New York, N.Y.; Garden Club of America, New York, N.Y.; Kennedy Galleries, New York, N.Y.; New York Botanical Garden, New York, N.Y.; Worth Avenue Gallery, Palm Beach, Fla.; Art Club of Washington, D.C.; and others.

Awards: Robert H. Montgomery Palm medal, by Fairchild Tropical Garden.

## ALAVA, Reino Olavi

- 9 Azorella filamentosa. Pen and ink.  $13 \frac{1}{4} \times 10$ . Signed, undated [ca. 1952]. Lent by Dept. Botany, Univ. Calif., Berkeley.
- 10 Azorella lehmanii. Pen and ink.  $13 \frac{1}{4} \times 10$ . Signed, undated [ca. 1952]. Lent by Dept. Botany, Univ. Calif., Berkeley.

Reino Olavi Alava. Born, Paimio, Finland, 21 May 1915. M.A. (Botany), Univ. of Turku, (Turku, Finland) 1947; Ph.D. (Botany), Washington, Univ., St. Louis, Mo., 1951. Professionally a botanist, illustrated many botanical studies. Currently Curator of Herbarium and Botanic Garden, University of Turku, Turku, Finland.

Work published in: various botanical journals. Originals drawn for American publications are at Dept. of Botany, University of California, Berkeley.



ALLEN, Dorothy O. (Mrs. Paul H.)

- 11 Lycaste aromatica (Orchidaceae). Pen and ink. 13 1/2 × 11. Signed, undated [August 1956]. Plant drawn from specimen in rocky gorges, near Monañita, Honduras.
- 12 Odontoglossum grande (Baby Orchid). Pen and ink. 13 × 10 7/8. Signed, undated [October 1956]. Plant drawn from specimen collected in Guatemala, flowered at Zamorano, Honduras.

Dorothy O. Allen. Born, Kirkwood, Mo., 9 May 1911. Illustrated papers and books of the late Paul H. Allen from 1947 to 1963. Address: Tela, Honduras.

Specialty: botanical illustration; pen and ink.

Work published in: Allen, Paul H. "Orchidaceae" in Woodson, R. E. et al "Flora of Panama" in Annals Missouri Bot. Gard. 36: 1-257 (Figs. 148-213). 1948. Allen, Paul H. The Rain Forests of Golfo Dulce. Gainesville, Fla., Univ. Florida Press, 1956.

Photo by Walter H. Hodge



## AMATEIS, Edmond

- 13 Rhododendron, dissection of flower parts. Pen and ink.  $3 \frac{1}{2} \times 10$ . Unsigned, undated [ca. 1959]. Reproduced as text figure drawing for Leach, David G. Rhododendrons of the world.
- 14 Rhododendron, text figure illustrating hand-pollination technique. Data as for no. 13, but  $4 \frac{3}{8} \times 10$ .
- 15 Rhododendron maddenii, trained as espalier. Data as for no. 13, but  $9 \times 12 \frac{1}{4}$ .
- 16 Rhododendron aperantum, leaves and floral details. Data as for no. 13, but  $3 \frac{1}{4} \times 7$ .
- 17 Rhododendron caloxanthum, leaf and flower. Data as for no. 13, but  $2 \frac{3}{4} \times 4 \frac{1}{4}$ .
- 18 Rhododendron nuttallii, leaf and flower. Data as for no. 13, but  $5 \frac{3}{4} \times 10 \frac{1}{4}$ .
- 19 Grafting techniques for Rhododendron. Text figure. Data as for no. 13, but  $13 \frac{3}{4} \times 9 \frac{1}{2}$ .
- 20 Rhododendron metternichii. Leaf and floral details. Data as for no. 13, but  $3 \frac{1}{4} \times 8$ .
- 21 Rhododendron wightii. Leaf and floral details. Data as for no. 13, but  $4 \times 9 \frac{1}{2}$ .
- 22 Rhododendron lacteum. Leaf and floral details. Data as for no. 13, but  $3 \frac{3}{4} \times 8 \frac{1}{2}$ .

Edmond Amateis. Born, Rome, Italy, 7 February 1897. Fellow, American Academy in Rome, 1921-24; Studied at Julian Academy, Paris, and Beaux-Arts Institute of Design, N.Y.; member, Nat. Acad. of Design, (Pres. 1942-44); Nat. Inst. of Arts and letters; Nat. Sculpture Soc. Address: 1620 Fifth St., Clermont, Fla.

Specialty: Sculptor, bot. illustrator.

Work published in: Leach, David G. Rhododendrons of the world. New York, Charles Schribner's Sons, 1961; many papers in Bull. of the Amer. Rhododendron Soc.

Work commissioned: war memorials, Baltimore and Kansas City; W. M. Davidson Memorial, Pittsburgh; "Polio Wall of Fame" Warm Springs, Ga.; Commerce Building, Washington, D.C.; Asiatic Theatre Medal (World War II); L.H. Bailey Medal (for Amer. Hort. Council).



## ANGEL, Marie Felicity

- 23 Convolvulus arvensis (Bindweed). Water color. 15 × 9 1/4.  
Signed, 1955.
- 24 Primula auricula (Auricula). Water color. 15 × 9 1/4.  
Signed, 1956.

Marie Felicity Angel. Born, London, England, 15 March 1923. St. Anne's College; Croydon School of Art; Associate, Royal College of Art (London) 1948. Free-lance artist. Address: Silver Ley, Oakley Rd., Warlingham, Surrey, England.

Specialty: Botanical artist (British flora); calligrapher.

Work published in: Angel, M. A bestiary. Cambridge, Mass., Harvard College, 1960 [Introduction by Philip Hofer.]



ARMER, Sidney

- 25 Field flowers: Trifolium pratense (Red Clover), Polypogon monspeliensis (Rabbitfoot Grass), Erigeron philadelphicus (Daisy Fleabane). Water color. 14 3/8 x 10 5/8. Signed, dated 1956.
- 26 Viburnum opulus (Cranberry bush). Water color. 14 1/8 x 10 3/8. Signed, dated 1952.

Sidney Armer. Born, San Francisco, 1871. Died, 10 May 1962, at Fortuna, Calif. Educated at Hopkins Art Institute (now San Francisco School of Fine Arts), later a student of Arthur Matthews and Douglas Tilden. Freelance commercial artist illustrating seed and nursery catalogues until retiring, about 1931. Specialized in water color portraits of California wildflowers 1931-62.

Works published in: trade catalogues (ca. 1900-1931) of Vaughns's Seed Company, Ferry-Morse Seed Company; in, Armer, Laura Cactus. New York, Frederick A. Stokes Co., 1934 (and other non-botanical books of his wife's authorship).

Exhibitions: Golden State Exposition, 1939; Gump Galleries, San Francisco, 1956; Horticultural Society of New York, 1949; International Flower Show, New York, 1949; American Museum of Natural History, New York, 1949; Los Angeles County Museum, 1942; Los Angeles International Flower Show, 1951, 1953.

Specialty: lithographs and water colors of horticultural and botanical subjects.

## AVINOFF, Andrey Nikolaivich

- 27 Rosa borboniana (Bourbon Rose). Water color. 11 3/8 × 8 1/4. Unsigned, undated.
- 28 Rosa odorata (Tea Rose). Water color. 10 3/4 × 7 3/8. Signed, undated.
- 29 Laeliocattleya orchid. Water color. 17 1/4 × 12 1/4. Unsigned, undated.
- 30 [Left to right] Hepatica americana (Hepatica, purple phase), Erythronium albidum (White Adder's-tongue), Erythronium americanum (Yellow Adder's-tongue, or Dogtooth-Violet), Hepatica americana (Hepatica, pale pink phase). Water color. 11 1/8 × 8 3/8. Reproduced in Jennings, O. E. Wild flowers of Western Pennsylvania and the Upper Ohio Basin, (1953) Lent by Carnegie Museum.
- 31 Arisaema stewardsonii (Jack-in-the-Pulpit, Indian-Turnip). Data as for above.
- 32 [Top to bottom] Trillium grandiflorum (Large-flowered Trillium, pink coloration of advanced flower maturity), T. nivale (Snow Trillium), T. grandiflorum (Large-flowered Trillium, freshly opened white flower). Data as for above.
- 33 Monarda didyma (Oswego-tea, Bee-balm). Data as for above.

Andrey Nikolaivich Avinoff. Born, Tulchin, Poland (then Russia), 14 Febr. 1884. L.L.B., Univ. Moscow 1905. D. Sc. (Hon.) Univ. Pittsburgh 1927; L.H.D. Washington & Jefferson Coll. Posts in Russia (1906-1917): Asst. Secy. Gen. Senate, Aide to the Emperor, staff of court protocol. Inter-

Photo, Carnegie Museum

national Red Cross 1917-1919. Emigrated to USA 1919. Assoc. Curator of Entomology, Carnegie Museum, Pittsburgh, 1924-26; Director, Carnegie Museum, 1926-45. Died, New York City, 16 July 1949.

Specialty: Entomologist; artist, specializing in natural history, especially water colors of wildflowers, orchids, and roses.

Work published in: Jennings, O. E. Wild flowers of Western Pennsylvania and Upper Ohio Basin. 2 vols. Pittsburgh, Univ. Pittsburgh Press, 1953. Adams, Helen H. [Ed.] Andrey Avinoff's portraits of orchids. [text notes, and 50 col. pls. of Cattleya.] New York, C. Harrison Conroy, 1960.



BEEBE, Francis Lyman

- 34 Cypripedium montanum (Mountain Lady-slipper). Scratch-board. 9 X 6 (sheet). Signed, undated. Reproduced in Szczawinski, A. F. The orchids of British Columbia. Handbook 16, Provincial Museum. Victoria, 1959.
- 35 [Left] Calochortus apiculatus (Baker's Star-tulip). [Right] Calochortus macrocarpus (Green-banded Star-tulip). Scratch-board. 9 X 6 (sheet). Signed, undated, unpublished.

Francis Lyman Beebe. Born, Lacombe, Alberta, 25 May 1914. Scientific illustrator, Provincial Museum, Victoria, British Columbia. Address: 660 Goyette, Victoria, B.C.

Specialty: wildlife illustration and painting (birds and mammals), and botanical illustration. Pen and ink, scratch board, water color.

Work published in: Handbook nos. 3-21, Provincial Museum of Natural History, Victoria, B.C. 1954 to 1963 (and continuing). Hardy, G. A. & W. V., Wild flowers of the Rockies. Saskatoon, Sask., H. R. Larson Publ. Co., 1949.

Photo by H. M. Webster



BENSON, (Mrs.) Mary Foley

- 36 [Left] Rhus diversiloba (Poison-Oak). [Right] Rhus radicans (Poison-Ivy). Water color (A copy by the artist; original owned by Hollister-Stier Laboratories). 14 7/8 × 11 3/8. Signed, undated [1964]. Reproduced as one of a series of 31 color plates of hay-fever producing plants, published by Hollister-Stier Laboratories, Los Angeles, Calif., 1963.
- 37 Juglans nigra (Black Walnut). Water color (a copy, as above). 16 3/4 × 12 5/8. Signed, undated [1964].

Mary Foley Benson. Born, Storm Lake, Iowa, 2 April 1905. Graduate, National School of Fine and Applied Art, Washington, D.C. 1927; student at Corcoran School of Art, Washington, D.C., Otis Art Institute, Los Angeles, 1948-51; Chief Scientific Illustrator, Bureau of Entomology, U.S. Dept. of Agr. until 1950. Free-lance illustrator 1950 to date. Address: Benson Studios, 8724 West 3rd St., Los Angeles 48, Calif.

Specialty: entomological and botanical illustration; water color, pen and ink.

Work published in: Journ. Washington Academy of Science vol. 28, nos. 1 and 3 (1958); Entomological poster sheets for U. S. Dept. of Agriculture, Washington, D.C., 1941; entomological plates in U.S. Dept. Agr. Yearbook, 1963; North American clear-wing moths of the family Aegeriidae, Smithsonian Institution Bull. 190; 31 color plates for Hay fever plant series, Hollister-Stier Laboratories, 1963.



BLOS, Maybelle (Mrs. Peter)

- 38 Telima grandiflora (Fringe Cups), with fern fronds. Water color.  $19 \frac{3}{4} \times 12 \frac{3}{4}$ . Signed, dated 1949.
- 39 Ribes sanguineum var. glutinosum (Flowering Currant). Water color.  $19 \frac{1}{1} \times 12 \frac{1}{2}$ . Signed, dated 1952.
- 40 Epiphyllum cartagense (Epiphyllum Cactus). Pen and ink.  $16 \frac{1}{4} \times 10 \frac{3}{4}$ . Signed, dated 1957. Shown at right, reproduction in Cactus and succulent journal 30: 25, 1958. [On indefinite loan, Botanic Garden, Univ. Calif., Berkeley.]
- 41 Nicotiana alata (Flowering Tobacco). Pen and ink.  $14 \frac{3}{4} \times 10 \frac{1}{4}$ . Signed, undated. Reproduced in Goodspeed, T. H. The genus Nicotiana. (1954), as Fig. 81. [On indefinite loan, Botanic Garden, Univ. Calif., Berkeley.]
- 42 Nicotiana undulata. Pen and ink.  $14 \frac{3}{4} \times 10 \frac{1}{4}$ . Signed, undated. Reproduced in Goodspeed, T. H. Op. Cit. as Fig. 75. [On indefinite loan, Botanic Garden, Univ. Calif., Berkeley.]

Maybelle Blos. Born, Acabastopol, Calif., 1 May 1906. A.B. (Fine Arts) Univ. of California (Berkeley) 1926 (cum laude); studied at art centers in Europe 1927-31. Exhibit designer and illustrator, National Park Service, Museum Division, Berkeley 1937-39; zoological illustrator, Museum of Vertebrate Zoology, Univ. of California 1940-43; part-time illustrator in Depts. of Zoology, Paleontology, and the Botanic Garden, Univ. California (Berkeley 1940 to date). Address: Blos Studios, 29 Life Oak Rd., Berkeley 5, California.

Specialty: scientific illustrator;  
primarily pen and ink.

Work published in: Goodspeed, T. H. The genus Nicotiana. Waltham, Mass. Chronica Botanica Press, 1954. Cactus and Succulent Journal, issues of 1952 to date.



BOWLES, Edward Augustus

- 43 Bouquet: [left to right] Rosa moyessi, Hebe speciosa 'Headfortii' (Veronica Headfortii a syn.), Allium murrayanum, Magnolia parviflora 'Wakehurst'. Water color.  $6 \frac{7}{8} \times 10 \frac{1}{8}$ . Signed, dated 6 June 1926.
- 44 Bouquet of Hydrangea macrophylla (Hortensias, Hydrangea). Water color.  $12 \frac{3}{4} \times 19 \frac{7}{8}$ . Signed, dated September 1926. Lent by G. Lawrence.

Edward Augustus Bowles. Born, Enfield, England, 14 May 1865; died, 7 May 1954. B.A. Jesus College, Cambridge 1884, M.A. 1891. Horticulturist, botanical illustrator, author.

Specialty: water color portraits of garden plants and flowers, notably of crocus, narcissus, iris, and other spring bulbs.

Work published in: 5 books by him - My garden in spring, 1914; My garden in summer, 1914; My garden in autumn and winter, 1915; A handbook of Narcissus 1934; A handbook of Crocus and Colchicum for gardeners, 1922, ed. 2 1952. Also in scores of papers by him in Journal, Royal Horticultural Society, Gardeners chronicle, The garden, and R.H.S. daffodil and tulip yearbooks.



## CHICKERING, Caroline Rogers (Mrs. Allen L. Jr.)

- 45 Gentiana calycosa (Explorer's Gentian). Water color.  
7 1/2 x 7 1/4. Signed, dated 1963.
- 46 Oncidium pusillum. Water color. 7 1/2 x 4 1/2. Painted  
in Tikal, Guatemala. Signed, dated 1963.
- 47 Catasetum integerrimum. Water color. 9 3/4 x 7 1/2.  
Painted in Tikal, Guatemala. Signed, dated 1963.

Caroline Rogers Chickering. Born, Brookline, Mass., 18 October 1907.  
Winsor School, Boston, 1926; Smith College ex '31; studied art in Paris  
2 years and at Woodbury School of Art, Boston. Free-lance botanical  
artist 1956 to date. Address: 300 Family Farm Drive, Woodside, Calif.

Specialty: water colors of California wildflowers and Guatemalan orchids.

Work completed for publication: 25 col. pls. for Chickering, A. L. Jr.,  
A monograph of Calochortus; 50 col. pls. for Popenoe, Wilson Flowering  
plants of Guatemala; 125 col. pls. of California wildflowers.

Exhibitions: International Flower Show, New York; Garden Club of America,  
New York.



## DAVIS, Natalie Harlan

- 48 Paeonia suffruticosa 'Terute-nishiki' (Japanese tree peony).  
Water color. 16 1/8 x 13 7/8. Signed, dated May 1963.
- 49 Paeonia suffruticosa 'Dokushin-den' (Japanese tree peony).  
Water color. 15 7/8 x 13 7/8. Signed, dated May 1963.

Natalie Harlan Davis. Born, Philadelphia, Pa., 11 January 1898. Graduate of Pennsylvania Museum School, Philadelphia, 1923; Pennsylvania Academy of Fine Arts, Philadelphia, 1929. Staff artist, Department of Botany, Univ. Illinois, Urbana, Ill.

Specialty: botanical illustration; pen and ink, wash, water color.

Work published in: Wister, John C. Four seasons in your garden. Philadelphia, J. P. Lippincott, 1936; Dorrance, Anne Fragrance in the garden. New York, Doubleday Doran, 1937; Wilson, Helen V. P. Geraniums and Pelargoniums. New York, Barrows & Co., 1946; Woman's home companion garden book. New York, Collier Publ. Co., 1946; Webb, Addison. Beekeeping. The Macmillan Co., 1952; Fuller, H. J. & Tippe, O. College botany. New York, Henry Holt, 1954; Fuller, H. J. The plant world, New York, Henry Holt, 1955. Plus illustrations in American home 1940-42; Better homes and gardens, 1946-48; Gourmet magazine, 1947-48; House and garden, 1937-41; Life magazine, April 16, 1940; Natural History Magazine, 1936-'38-'40; Popular gardening, 1951-52; Sunset magazine, 1951; Women's home companion, 1949.

Work commissioned: water color paintings of tree peonies for Pennsylvania Horticultural Society; numerous flower portraits for private individuals.





DOMJAN, Joseph

- 50 Aquilegia vulgaris (Columbine). Color woodcut. Block size  $9 \frac{1}{4} \times 6 \frac{3}{4}$ . Signed, no. 6 of 25, dated 1960.
- 51 Euphorbia pulcherrima (Poinsettia). Color woodcut. Block size  $18 \frac{1}{2} \times 13 \frac{3}{8}$ . Signed, no. 4 of 25, dated 1963.
- 52 Saintpaulia ionantha (African-violet). Color woodcut. Block size  $9 \frac{1}{4} \times 6 \frac{3}{4}$ . Signed, no. 10 of 25, dated 1962.
- 53 Digitalis sp. and other flowers (Foxglove). Color woodcut. Block size  $18 \frac{1}{2} \times 13 \frac{1}{2}$ . Signed, no. 9 of 25, dated 1959.
- 54 Laeliocattleya hybrids (?) ("Two Orchids"). Color woodcut. Block size  $18 \frac{1}{2} \times 13 \frac{1}{2}$ . Signed, no. 8 of 25, dated 1963.
- 55 Thistle. Color woodcut. Block size  $18 \frac{1}{2} \times 13 \frac{1}{2}$ . Signed, no. 4 of 25, dated 1960.
- 56 Aquilegia vulgaris (Columbine). Artist's proof of master block for color woodcut (see no. 50). Block size  $9 \frac{1}{4} \times 6 \frac{3}{4}$ . Signed, dated 1962.
- 57 [left] Epilobium angustifolium (Fireweed) and other flowers. Artist's proof of master block for color woodcut. Block size  $18 \frac{1}{2} \times 13 \frac{1}{2}$ . Signed, dated 1962.

(For biographical sketch, see p. 24)

## DOMJAN, Joseph

Joseph Domjan. Born, Budapest, Hungary, 15 March 1907. Budapest Lonyai Trade School, 1922-26; Hungarian Royal Academy of Fine Arts, 1935-42; teacher of woodcut techniques in China, 1955; emigrated to U.S.A. 1956. Address: Art Edge Studios, River Edge, N. J.

Specialty: multicolored woodcuts, pen and ink drawings, portraits.

Work published in: Tarr, László J. Domjan: thirty-two coloured woodcuts. Budapest, Corbina, 1956. Postcards, Metropolitan Museum of Art, New York.

Woodcuts produced in U.S.A.: Domjan's woodcuts require 4-8 blocks for each print, limited to 25 prints of each design. To date he has distributed prints of 57 scenes or figures, 34 birds (including the peacock), and 43 of floral subjects. Several hundred were produced in Hungary prior to 1956.

Exhibitions and Awards: National Salon, Budapest, 1936; Nemes Marcell Prize, Budapest, 1948; International Exhibition, Lugano, Switzerland, 1952; Munkacsy Prize of Fine Arts, Budapest, 1955; awarded the title, "Master of the Color Woodcut", Peking, 1955; Kossuth Prize of Art, Budapest, 1956. Has exhibited in major museums of eastern U.S. and in California.



## DORMON, Caroline Coroneos

- 58 Gilia rubra (Scarlet Gilia). Water color.  $8 \frac{1}{4} \times 4$ . Signed, undated. Reproduced in Dormon, C. Flowers native in the Deep South.
- 59 Clematis texensis [C. coccinea] (Scarlet Clematis). Water color  $9 \frac{1}{8} \times 4 \frac{7}{8}$ . Data as above.

Caroline Coroneos Dormon. Born in Arcadia, Louisiana, 1889. B.L. Judson College, and a certificate in art. Botanist-artist, and authority on the wildflowers of Louisiana and adjoining regions. Address: Saline, Louisiana.

Specialty: water color portraits of Louisiana wildflowers.

Work published in: Dormon, C. C. Wild flowers of Louisiana. New York, Doubleday, 1934; Flowers native to the Deep South. Harrisburg, Pa., J. H. Macfarland Press, 1958.



## EVANS, Henry

- 60 Cirsium vulgare (Bull Thistle). Linoleum cut. 16 1/4 × 11.  
Signed, undated [ca. 1962].
- 61 Dipsacus sylvestris (Teasel). Data as above.
- 62 Rosa odorata (Tea Rose). Linoleum cut. 18 × 12. Signed,  
undated [ca. 1963].
- 63 Cordyline terminalis (Ti plant). Data as above.
- 64 Eucalyptus sp. Linoleum cut. 16 1/4 × 11. Signed, undated  
[ca. 1962].
- 65 Spider Chrysanthemum. Data as above.
- 66 Camellia reticulata (Camellia). Linoleum cut. 17 1/2 × 12.  
Signed, undated.
- 67 Tradescantia virginiana (Spiderwort). 2-color linoleum cut.  
17 1/2 × 12. Signed, undated [ca. 1962].
- 68 Paphiopedalum insigne (Cypripedium). Linoleum cut. 20 × 13.  
Signed, undated.
- 69 Plantago lanceolata (Buckhorn Plantain). Data as above.
- 70 Prunus sp. (Flowering Cherry). 3-color linoleum cut. 20 ×  
13. Signed, undated [ca. 1963].
- 71 Chaenomeles lagenaria (Japanese-Quince). Linoleum cut.  
20 × 13. Signed, undated [ca. 1963].

Henry Evans. Born, Superior, Wisc., 16 May 1918. B.A. Univ. Arizona 1942.  
Printmaker, specializing in botanical portraits. Address: 308 Clement  
St., San Francisco, California 94118.

Specialty: linoleum block prints in one to four colors each. About 350  
portraits, life size or nearly so, completed 1960 to date. Sold by  
subscription.

Work published in: Eleven albums of "Botanical prints" by Henry Evans.  
Individual prints have been reproduced in Pacific discovery, San  
Francisco Chronicle, and Los Angeles Frontier.

Exhibitions: California Academy of Sciences, San Francisco; Chicago  
Natural History Museum; San Francisco Public Library.

## EVERARD, Barbara Mary Steyning (Mrs. Raymond)

- 72 Geranium phaeus (Dusky Cranesbill). Water color. 14 × 10.  
Signed, undated [1962].
- 73 Lupinus arboreus (Tree Lupin). Data as above.

Barbara Mary Steyning Everard. Born, Telscombe, nr. Lewes, Sussex, England, 27 July 1910. Fellow, Royal Horticultural Society, member Botanical Society of the British Isles. Address: Fairfield Cottage, 12 School Lane, Lower Bourne, Farnham, England.

Specialty: free-lance botanical illustration and art.

Work published in: Polunin, O. & Huxley, A. Flowers of the Mediterranean. London, 1964 (in press).

Exhibition: Medici Gallery, London.



FURSE, John Paul Wellington

- 74 Fritillaria, plate of 19 species. Water color. Sheet size 14 × 10. Signed, undated [ca. 1959]. Reproduced as Plate 13 in Synge, P. M. Collins guide to bulbs. London, Collins, 1961.

John Paul Wellington Furse. Born, England (?), 13 Oct. 1904. Educated at Osborne; Dartmouth: Royal Navy Engineering College, Keyham. Retired as Rear Admiral, from Royal Navy, 1959. Member, botanical expedition to Turkey and Iran, 1960. A grandson of the botanical artist, Mrs. John Adding Symonds, sister of the better known botanical artist, Marianne North. Address: Hegg Hill, Smarden, Kent, England.

Specialty: botanical illustration; water color, pen and ink.

Work published in: Synge, Patrick M. Collins guide to bulbs. London, Collins, 1961.

## GRISWOLD, Ralph Esty

- 75 Cyclamen persicum (Cyclamen). Lithograph. 6 3/8 x 7 7/8.  
Signed, undated [ca. 1931].
- 76 Laeliocattleya 'British Queen'. Lithograph. 8 1/8 x 6 3/8.  
Signed, undated [ca. 1931].

Ralph E. Griswold. Born, Warren, Ohio, 22 August 1894. B.S. Cornell Univ. 1916. M.L.D. same, 1917; Fellow, American Academy in Rome 1920-23. In private practice as Landscape Architect 1930 to date. Resident landscape architect for Amer. Military Cemetery, Anzio, Italy; architect for landscape restoration Athenian Agora, Athens, Greece; res. fellow, Dumbarton Oaks Research Library and Collections; historical research for Williamsburg on 18th century gardens. Address: 206 Gladstone Rd., Pittsburgh 17, Pa.

Specialty (in botanical art and illustration): landscape renderings, and botanical art in various media.

Work represented by lithographic prints of botanical subjects.



## HAINARD, Robert

- 77 Cypripedium calceolus (Yellow Lady-Slipper). Color woodcut.  $10 \frac{7}{8} \times 8 \frac{3}{8}$ . Signed, no. 42 of 82, dated 1947.
- 78 Primula veris (Cowslip). Color woodcut.  $4 \frac{7}{8} \times 6 \frac{3}{8}$ . Signed, no. 59 of 64, dated 1953.
- 79 Leontopodium alpinum (Edelweiss). Color woodcut.  $6 \frac{3}{4} \times 6 \frac{1}{8}$ . Signed, no. 18 of 68, dated 1962.
- 80 Habenaria ciliaris (Fringed Orchis). Color woodcut.  $14 \frac{3}{4} \times 10 \frac{1}{2}$ . Signed, no. 60 of 77, dated 1958.

Robert Hainard. Born, Geneva, Switzerland, 11 September 1906. Graduate of Ecole des Beaux-Arts (Geneva), and Ecole des Arts Industriels de Genève. Free-lance wood engraver. Address: Bernex, Genève, Switzerland.

Specialty: sculpture (in wood), woodcuts, and wood engravings of natural history subjects.

Work published in: Hainard, R. Mammifères sauvages d'Europe, 2 vols. Neuchâtel, 1948-49. Hainard, R. Et la nature? G. de Büren, Genève, 1943; Hainard, R. Nature et mécanisme. Griffon, Neuchâtel, 1946; Blanchet, Maurice, Robert Hainard. Ed. 2. Genève, Editions Pierre Cailler, 1959.

Exhibitions: Galerie Betty Thommen, Basel, 1931; Musée de l'Athénée, Genève, 1932, '41, '46, and '50; Guilde du Livre, Lausanne, 1940, '43; Expositions, Malmö and Stockholm, 1950; Galerie Chichio Haller, Zurich, 1956; Expositions, Lenin-grad, Moscow, Riga, 1957; Guilde internationale de la gravure, 1958; Comptoir suisse, Lausanne, 1958.





## HALLER, Isabelle Clara

- 81 Morchella esculenta (Morel). Pen and ink.  $7 \frac{1}{2} \times 5 \frac{1}{4}$ . Signed, undated [ca. 1962]. Reproduced in Muller, W. H. Botany. 1963. On indefinite loan from the artist.
- 82 Leaf [at right], cross-section [top], 3-dimensional sectional view showing cellular structure. Pen and ink.  $11 \times 11 \frac{1}{2}$ . Signed, undated [1962]. Reproduced in Muller, W. H. Botany. 1963. On indefinite loan from the artist.
- 83 Davallia canariensis (Rabbits-foot fern). Pen and ink.  $12 \times 9 \frac{1}{2}$ . Signed, undated [1962]. [A, creeping stem and fronds; B, Pinna, lower side with sori; C, Sorus, with sporangia; D, stem, cross-section]. Reproduced in Muller, W. H. Botany. 1963. On indefinite loan from the artist.

Isabelle Clara Haller. Born, Altadena, Calif., 25 June 1934. B.A. (Botany) Univ. California, Los Angeles 1956. Medical illustrator, Sansum Medical Clinic, Santa Barbara, 1960-62; currently botanical illustrator (part-time), Dept. of Biological Sciences, Univ. Calif., Santa Barbara; free-lance artist (part-time). Address: Dept. Biol. Sci., Univ. Calif., Santa Barbara, Calif.

Specialty: botanical illustration, pen and ink.

Work published in: Muller, W. H. Botany: a functional approach. New York, The Macmillan Co., 1963. Haller, J. R. Variation and hybridization in Ponderosa and Jeffery pines. 1962.



## HARSHBARGER, Gretchen Fischer (Mrs. Clay)

- 84 Campanulaceae (Bellflower Family). Pen and ink. 10 1/4 x 17 1/4. Unsigned, undated [ca. 1938]. Reproduced in Fischer, H. F. The flower family album. Shenandoah, Ia. 1940.

Gretchen Fischer Harshbarger. Born, Shenandoah, Iowa, 22 March 1906. B.L.A. Cornell Univ 1928. Garden editor, Household Magazine 1952-58; editorial staff American Home 1959-62. Currently a free-lance horticultural writer and photographer. Address: RR 1, River Heights, Iowa City, Ia.

Work published in: many articles in American Home, Flower and Garden, Flower Grower, and Household Magazine. Illustrated, Fischer, Helen Field, The flower family album. Shenandoah, Ia., 1940.



HASSEN, Anne

- 85 Chimaphila umbellata (Wintergreen, Western Prince's-Pine).  
Pen and ink.  $10 \frac{3}{4} \times 8 \frac{3}{4}$ . Signed, undated. Reproduced  
in Museum Handbook no. 19 (see below).

Anne Hassen. Born, Victoria, British Columbia, 5 October 1940. B.S.  
(Biology) Victoria Univ. 1963. Botanical illustrator. Address: 403  
Federal Building, Victoria, B.C.

Work published in: The Heath Family. Museum Handbook No. 19. British  
Columbia Provincial Museum of Natural History and Anthropology,  
Victoria, B.C., 1962.



HOLLADAY, Harriett McDonald (Mrs. Henry T.)

- 86 Erythronium americanum (Eastern Trout-lily, Yellow Adder's-tongue, Dogtooth-violet). Woodcut, hand colored. Sheet size  $9 \frac{3}{4} \times 6 \frac{1}{8}$ . Reproduced in A wild flower book ... (see below).
- 87 Dicentra cucullaria (Dutchman's-breeches). Data as above.

Harriett McDonald Holladay. Born, Louisville, Ky., 9 August 1907. Graduate, Art Institute, Chicago 1930; studied under Victor Hammer and Fritz Kredel, Transylvania College, Lexington 1948-49, 1951. Free-lance botanical artist. Address: 134 McDowell Rd., Lexington, Ky.

Specialty: woodcuts and water colors of wild flowers

Work published in: Dupré, Hunter, Refinesque in Lexington. Lexington, Bur Press, 1945. Anon. A wild flower book with ten woodcuts by Harriett MacDonald [sic] Halladay. [Foreword] by Rena Niles. Lexington, Ky., The Anvil Press, 1956 (Limited edition).



HOOD, Mary V. (Mrs. Alexander Wm.)

- 88 Calochortus amoenus (Purple Fairy Lantern). Water color.  
17 5/8 x 8 5/8. Signed, undated.
- 89 Gentiana calycosa (Explorer's Gentian). Water color.  
15 7/8 x 9 7/8. Signed, undated.

Mary V. Hood. Born in Alpes-Maritimes Prov., France, 20 March 1901. Moved to California in 1925. Collaborator and illustrator, National Parks Interpreter Service, Yosemite National Park 1953 to date. (Husband is retired Professor of Mathematics, Los Angeles City College, Los Angeles, Calif.). Free-lance artist and nature photographer. Address: 138 South Wilton Dr., Los Angeles 4, Calif.

Specialty: botanical artist (California wildflowers), nature photography (10,000 color transparencies of California plants and animals given to Univ. Calif., Los Angeles), lecturer on nature study.

Work published in: 101 Wildflowers of Yosemite. Yosemite Natural History Assoc., 1938. Lyman, W. W. California wildflowers in verse and picture. Privately printed, Los Angeles, 1939. Many leaflets of the Los Angeles Audubon Society, and in contributions to Yosemite Notes.



## HOTTES, Alfred Carl

- 90 Passiflora caerulea (Passion Flower). Water color. 12 3/4 × 9 5/8. Unsigned, undated.
- 91 Kalanchoë tomentosa (Panda Plant). Water color. 12 3/4 × 9 5/8. Signed, undated.
- 92 Lynanthus floribundus (Catalina Ironwood). Scratchboard. Design area 8 5/8 × 6 3/8. Signed, undated.
- 93 Illicium anisatum (Anise-Tree). Data as for above.
- 94 Iochroma lanceolatum (Iochroma). Data as for above.
- 95 Markhamia lutea (Markhamia). Data as for above.

All lent by Dept. Botany, Univ. Calif., Los Angeles.

Alfred Carl Hottes. Born, Ithaca, N.Y., 16 March 1891. B.S. Cornell Univ. 1913, M.S.A. 1914. Instr. Biol, Cornell Univ. 1913-14, Instr. Floriculture, Cornell Univ. 1914-16; Prof. Horticulture, Ohio State Univ. 1916-29. Retired to Calif. 1930. Died, 28 Febr. 1955.

Specialty: author of many horticultural books, the majority illustrated by him. Painted flower portraits as an avocation.

Work published in: Hottes, A. C. Flower garden for the amateur. Forest Park, Ill., Midland Publ. [1949]. Hottes, A. C. Garden facts and fancies. New York, Dodd, Mead Co., [1949].



## HUNTLEY, Victoria Hutson (Mrs. Ralph)

- 96 Kalmia latifolia (Mountain-Laurel). Crayon. 8 1/2 × 8 1/2. Signed, dated 1941.
- 97 Hepatica americana (Hepatica). Lithograph. 9 3/4 × 8 1/2. Signed, dated 1946.
- 98 Asclepias syriaca (Common Milkweed). Lithograph. 9 3/8 × 8 5/8. Signed, dated 1935.
- 99 Asclepias syriaca (Common Milkweed). Crayon with water color washes. 8 7/8 × 7 5/8. Signed, dated 1941.
- 100 Dicentra cucullaria (Dutchman's Breeches). Crayon with water color washes. 10 3/4 × 10. Signed, dated 1942.

Victoria Hutson Huntley. Born, Hasbrouck Heights, N.J., 9 October 1900. Studied at N.Y. School of Fine and Applied Art 1918-19; Art Students' League of N.Y. 1919-20; Taught at College of Industrial Arts, Denton, Tex. 1921-23, Birch-Wathen School, N.Y. City, 1934-42, Pomfret (Conn.) School 1942-46. Professional artist, lithographer, and painter. Address: 314 River Road, R.F.D. 1, Chatham, N.J.

Specialty: lithography and painting, landscapes and natural history subjects.

Awards: Purchase Prize, Library of Congress 1945; Daumier Prize for best American lithograph of 1946; National Institute of Arts and Letters, 1947; Guggenheim Fellowship for creative work in lithography 1948; First prize in lithography, Library of Congress 1949; Purchase Prize, Art Students' League N.Y. 1951; Municipal Art League prize, Art Institute of Chicago 1961; Cannon Prize, National Academy of Design 1962.

Work is represented in 21 major museums and collections in America. A mural "Fidler's Green" is in Springville, N.Y. Post Office (1938); another, "The Packet Sails from Greenwich" is in Greenwich, Conn. Post Office (1939).



JANISH, Jeanne Russell (Mrs. Carl F.)

- 101 Dudleya angustifolia (Dudleya). Pen and ink. 6 1/8 × 4.  
Signed, 1929.
- 102 Fouquieria splendens (Ocotillo, Coach-Whip). Pen and ink.  
6 1/8 × 3 7/8. Signed, dated 1929.
- 103 Pinus radiata (Monterey Pine). Pen and ink. 6 1/2 × 6.  
Artist's copy. Signed, dated 1964. Original reproduced in  
Munz, California shore wildflowers.
- 104 Cryptantha humilis (Alpine Forget-me-not). Pen and ink.  
6 1/2 × 6. Artist's copy. Signed, dated 1964. Original  
reproduced in Munz, California mountain wildflowers.
- 105 Agaricus sp. (Mushroom). Pencil drawing. 2 1/2 × 2 1/2.  
Unsigned, undated.
- 106 Godetia amoena (Farewell-to-Spring). Water color. 7 1/2 ×  
4. Signed, dated 1929.
- 107 Eschscholzia californica (California-Poppy). Water color.  
6 1/2 × 4. Signed, dated 1929.
- 108 Boletus sp. (Boletus mushroom). Water color. 4 1/2 ×  
3 3/4. Signed, dated 1929.
- 109 Mushroom. Water color. 4 1/2 × 3 1/4. Signed, dated  
1929.
- 110 Adiantum pedatum (Maidenhair Fern). Water color. 7 1/2 ×  
6 1/4. Signed, dated 1929.

Jeanne Russell Janish. Born, Marshalltown, Iowa, 20 October 1902. A.B. Vassar College 1924, M.A. (Geology) Stanford Univ. 1925. Peking, China, 1929-34. Free-lance artist (biology) at Stanford 1934-41 (taught Scientific Illustration 1936-41); Free-lance botanical artist, Santa Fe, N.M. 1949-51; at Kansas City, Mo., 1952-53, and in Nevada 1955 to date. Address: 2015 N. Carson St., Carson City, Nev.

Specialty: free-lance botanical artist and  
illustrator.

Work published in: Smith, G. M. Marine algae of the Monterey Peninsula. Stanford Univ. Press, 1944; Abrams, L. Illustrated flora of the Pacific States. Stanford Univ. Press, 1951, '54, '60; Hitchcock, L. et. al. Vascular plants of the Pacific Northwest. Univ. Washington Press, 1959, '61. Munz, P. A. California mountain wildflowers, Berkeley, Univ. Calif. Press, 1963; Munz, P. A. California shore wildflowers, Berkeley, Univ. Calif. Press, 1964 (in press).





## JOHNSON, Arthur Monrad

- 111 Scirpus paludosus (Bayonet-Grass). Pen and ink.  $14 \times 9 \frac{7}{8}$ . Signed, undated. Reproduced in Johnson, A. M. Taxonomy of the flowering plants. Lent by Dept. of Botany, Univ. Calif., Los Angeles.
- 112 Cyperus esculentus (Yellow Nut-grass). Data as for above.

Arthur Monrad Johnson. Born, Fredrikstad, Norway, 19 January 1878. A.B. Univ. Minn. 1904; Ph.D. 1919. On the staff, Dept. Botany, Univ. Calif., Los Angeles 1927-42, lecturer in scientific illustration, 1940-42. Died, 19 July 1943.

Specialty: Botanical illustration, pen and ink, water color.

Work published in: Johnson, A. M. Taxonomy of the flowering plants. New York, Century Co., 1931. Many papers in periodicals.

Exhibitions: Brooklyn, Chicago, Los Angeles, Minneapolis, Sacramento, San Francisco.



JOHNSTON, Edith Farrington (Mrs. A. L.)

- 113 Stapelia gigantea (Toad-cactus). Water color. 17 × 14.  
Signed, dated. 1955. Reproduced in Horticulture.
- 114 Musa sp. (Banana flowers). Water color. 19 3/4 × 14 1/4.  
Signed, undated.

Edith Farrington Johnston. Born, Waucoma, Iowa, 2 May 1888. B.A. Univ. Colorado 1912. Studied botanical art under Mary Eaton. Free-lance botanical portraitist. Address: 1115 E. Central Blvd., Orlando, Fla.

Specialty: water color portraits of flowers for botanical publications.

Work published in: McKenny, M. A book of wildflowers. New York, Macmillan Co., 1939; McKenny, M. A book of garden flowers. New York, Macmillan Co., 1940; McKenny, M. A book of wayside fruits. New York, Macmillan Co., 1945. Johnston, E. F. Strange visitor. New York, Macmillan Co., 1947. Hylander, C. The Macmillan wildflower book. New York, Macmillan Co., 1954. Many flower portraits reproduced in color in American Home, others in Chronica Botanica, N. Y. Botanical Garden Journal.

Exhibitions: Colorado wildflower, by Garden Club of America, New York 1938. American wildflowers, Roosevelt Hall, American Museum of Natural History, 1939; galleries in Bronxville, N.Y., Jacksonville and St. Augustine, Fla., Univ. Colorado, Florida State Museum, Gainesville.



KREDEL, Fritz

- 115 Wood and grass. Hand colored woodcut.  $6 \frac{1}{4} \times 5 \frac{5}{8}$ .  
Signed, dated 1963.
- 116 Viola sp. (Violets). Data as for above.
- 117 Convolvulus arvensis (Field Bindweed). Hand colored woodcut.  $7 \frac{5}{8} \times 5 \frac{7}{8}$ . Signed, dated 1962.
- 118 Taraxacum officinale (Dandelion). Hand colored woodcut.  $7 \frac{5}{8} \times 6 \frac{3}{8}$ . Signed, dated 1963.

All reproduced in Salter, G. Am Wegesrand (1961).

Fritz Kredel. Born, Michelstadt, Germany, 8 February 1900. Graduate of Real-Gymnasium, Darmstadt, Germany. Studied under Rudolph Koch and Victor Hammer. Free-lance artist, cartoonist, wood engraver. Address: 18 Pinehurst Ave., New York 33, N.Y.

Specialty: book illustrator; flower portraiture, woodcuts colored by hand.

Work published in: Das Blumenbuch [250 hand colored woodcuts]. Darmstadt, Ernst Ludwig Presse, 1929-30. Koch, R. Das kleine Blumenbuch. Leipzig, Insel Verlag, n.d. [ca. 1941?]. Koch, R. Das Blumenbuch [80 hand colored woodcuts]. Leipzig, Insel Verlag, 1942. Series of flower and plant color charts for Woman's Day, 1948. Salter, G. Am Wegesrand. Frankfurt am Main, Der Goldene Brunnen, 1961, and in scores of non-botanical works, including Limited Editions Club productions.

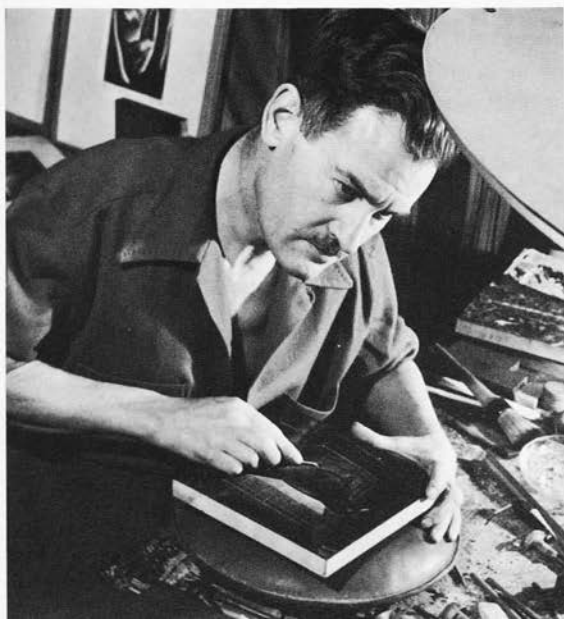
## LANDACRE, Paul Hambleton

- 119 Castanea pumila (Chinquapin). Scratchboard.  $3 \frac{1}{4} \times 6 \frac{5}{8}$ . Unsigned, undated. Reproduced in Peattie, D. C. A natural history of trees of Eastern North America.
- 120 Carya ovata (Shagbark Hickory). Scratchboard.  $8 \frac{7}{8} \times 6$ . Data as for above.
- 121 Same, but  $4 \frac{1}{8} \times 6 \frac{1}{2}$ .
- 122 Liriodendron tulipiferum (Tulip-Tree). Scratchboard.  $9 \times 5 \frac{7}{8}$ . Data as for above.
- 123 Diospyros virginiana (Common Persimmon). Scratchboard. Data as for above.
- 124 Iris. Wood engraving.  $8 \times 6$ . Signed posthumously, undated.
- 125 Zea mays (Indian corn). Wood engraving. Signed posthumously, undated.

Paul Hambleton Landacre. Born, Columbus, Ohio, 9 July 1893. Student at Ohio State Univ. Instructor of Wood Engraving, Los Angeles Art Institute. Free-lance artist, wood engraver, print maker. Died, 3 June 1963.

Specialty: Artist and wood engraver. Illustrated fine editions of many books. Prints of his wood engravings sought and possessed by leading collectors and institutions.

Photo by Jakobsen



Work published in: Peattie, D. C. Flowering earth. New York, G. P. Putnam's Sons, [ca. 1937]; Peattie, D. C. A natural history of trees of Eastern and Central North America. Boston, Houghton Mifflin, 1950; Peattie, D. C. A natural history of Western trees. Boston, Houghton Mifflin, 1953; Hutch, J. W. The great chain of life [1963]; Darwin, C. On the origin of species. New York, Limited Editions Club, 1963.

## LEAK, Virginia Louise

- 126 Lathyrus odoratus (Sweet Pea). Zinc etching.  $6 \frac{5}{8} \times 5$ .  
Unsigned, undated [ca. 1963].
- 127 Plectranthus australis (Plectranthus). Zinc etching.  $9 \times 7 \frac{1}{4}$ .  
Unsigned, undated [ca. 1963].

Virginia Louise Leak. Born, Iowa City, Ia., 28 June 1940. B.A. Lindenwood College 1962; M.A. Univ. Calif., Los Angeles 1964. Free-lance botanical artist. Address: 9360 Beverly Crest Drive, Beverly Hills, Calif.

Specialty: Botanical illustration; water color, pen and ink, engraving.

Work published in: A guide book to the Univ. Calif., Los Angeles, Botanic Garden (in preparation).

## LEIGHTON, Clare

- 128 *Fritillaria imperialis* (Crown Imperial). Wood engraving.  
 5 1/2 x 3 1/4. Signed, undated [ca. 1934]. Reproduced in  
Four hedges.

Clare Leighton. Born, London, England, 12 April 1901. Student, Brighton School of Art, Slade School, Central School of Arts and Crafts. Present activities unknown. Last known address: 161 Brattle St., Cambridge 38, Mass.

Specialty: artist, wood engraver, illustrator of own books.

Books written and illustrated: The farmer's year; ... London, Collins, 1933; Four hedges; ... New York, Macmillan Co., 1935; Country matters, ... New York, Macmillan Co., 1937; Sometimes-never. New York, Macmillan Co., 1939.

LETTY, Cythna (Mrs. Cythna Lindenberg Forssman)

- 129 Zantedeschia aethiopica (Calla-Lily). Water color.  $14 \frac{3}{8} \times 9 \frac{5}{8}$ . Artist's copy, signed, undated [1960]. Original reproduced in Flowering plants of Africa (pl. 1190), and the property of the Dept. of Agriculture, Republic of South Africa.
- 130 Protea cynaroides. Water color.  $12 \frac{3}{8} \times 9 \frac{7}{8}$ . Artist's copy, signed, undated [1960]. Original owned and reproduced by South African Airways.

Cythna Letty. Born, Standerton, Transvaal, Republ. So. Afr., 1 January 1895. Technical Artist, Division of Veterinary Science, 1925-27; at Botanical Research Institute, 1927-38, 1945 to date. Address: 163 Bourke St., Pretoria, So. Afr.

Work published: more than 650 water color plates reproduced in color in the journal Flowering plants of Africa (formerly, Flowering plants of South Africa). Illustrations in: Edible wild fruits of the Transvaal. Weeds of South Africa. White, A. & Sloane, B.L. The Stapelieae. Pasadena, Abbey Press, 1937. Bews, J.W. The world's grasses. London, 1939. White, A., Dyer, R.A. & Sloane, B.L. The succulent Euphorbieae. Pasadena, Abbey Press, 1941. Codd, L.E.W. Trees and shrubs of the Kruger National Park. Pretoria, S.A. 1951; Chippindall, L.K.A. et al. Grasses and pastures of South Africa, 1955. Letty, C. Wild flowers of the Transvaal. Pretoria, S.A. 1962. Watt, J.M. & Breyer-Brandwyk, M. G. Medicinal and poisonous plants of Southern and Eastern Africa. Ed. 2. Edinburgh, E. & S. Livingstone, 1962. Illustrated several papers in Farming.



## LIEBERMAN, Frank Joseph

- 131 Agaricus campestris (Common Field Mushroom). Water color. 11 X 8. Signed, dated September 1957.
- 132 Plantago lanceolata (Buckhorn Plantain). Water color. 11 3/4 X 8. Signed, undated. Reproduced in Flynn, J. F., How to grow and keep a better lawn.
- 133 Rumex acetosella (Common sorrel, Sheep Sorrel). Water color. 11 3/4 X 7 1/2. Signed, undated. Reproduced in Flynn, J. F., How to grow and keep a better lawn.

Frank Joseph Lieberman. Born, Atlanta, Ga., 4 March 1910. Free-lance artist, graphics designer, and typographer. Address: Box 186, Woodstock, Vt.

Specialty: drawings and paintings of fungi and wildflowers.

Work by or published in: Lieberman, F. J. A short study of species. New York, Knickerbocker Spice Mills, 1941; Flynn, J. F. How to grow and keep a better lawn. New York, Simon & Schuster, 1951. Designer of Vermont Life Magazine.





## MACK, Warren Bryan

- 134 Kalmia latifolia (Mountain-Laurel). Wood engraving. Block area 10 X 14. Signed, undated. Reproduced by the artist on personal greeting card.

Warren Bryan Mack. Born, Flicksville, Pa., 18 January 1896. Ph.B. Lafayette College 1915; B.S. Penna. State College 1921; M.S. Mass. State College 1924; Ph.D (plant physiology) Johns Hopkins 1929; D.Sc. Lafayette College 1946. Instr. Horticulture, Penna. State Univ. 1923-29, Prof. 1930-37, Chm Dept. Hort. 1937-52. Died, 6 July 1952.

Art specialty: wood engraving and print-making.

Exhibitions: Metropolitan Museum, New York; Carnegie Institute, Pittsburgh; Smithsonian Institution, Washington, Library of Congress.

Awards: Manning Purchase Prize (1938), Appalachian Museum Purchase Prize (1940); Fellow, National Academy of Design.



## MARTIN, Collette

- 135 Senecio rodriguezii (Groundsel). Water color.  $9 \frac{3}{4} \times 8 \frac{1}{4}$ . Signed, dated 1960.
- 136 Paeonia mascula [P. corallina] (Mediterranean Peony). Water color.  $13 \frac{1}{4} \times 9 \frac{3}{4}$ . Signed, dated November 1963.
- 137 Sonchus spinosus (Sow-thistle). Water color.  $12 \times 9 \frac{1}{4}$ . Signed, dated June 1963.
- 138 Globularia majoricensis (Globe-Daisy). Water color.  $13 \frac{1}{2} \times 10 \frac{1}{8}$ . Signed, dated 1963.
- 139 Astragalus poterium (Milk-Vetch). Water color.  $10 \frac{3}{4} \times 9 \frac{1}{4}$ . Signed, dated July 1963.

Collette Martin. Born in Switzerland, 1910. For many years residing in the Balearic Isles. Botanical artist. Address: Ca'n Soler, Soller, Mallorca, Baleares, Spain.

Specialty: water colors of Mediterranean wildflowers, particularly for botanical use. Plants of about 80 endemics of the Balearic Isles and of more than 200 non-endemic plants of the Mediterranean completed.

Work published in: advertising and other commercial items by Nestle and Tobler chocolate manufacturers.



## McEWEN, Roderick (Rory)

- 140 Dianthus caryophyllus (Allwoods Carnation 'Queen of Sheba'). Water color, on vellum. 18 3/8 × 11 3/8. Signed, dated December 1962.
- 141 Tulipa clusiana (Clusius' Tulip 'Chrysantha' [yellow and red], and 'Stellata' [pink]. Water color, on vellum. 17 3/4 × 11 7/8. Signed, dated October 1962.

Roderick (Rory) McEwen. Born, Polwarth, Scotland, 12 March 1932. B.A. (Honors) Cambridge Univ. 1955. A great great grandson of the well-known English botanist and horticulturist, John Lindley (many of whose drawings are at the Hunt Botanical Library). Address: 9 Tregunter Rd., London S.W. 10, England.

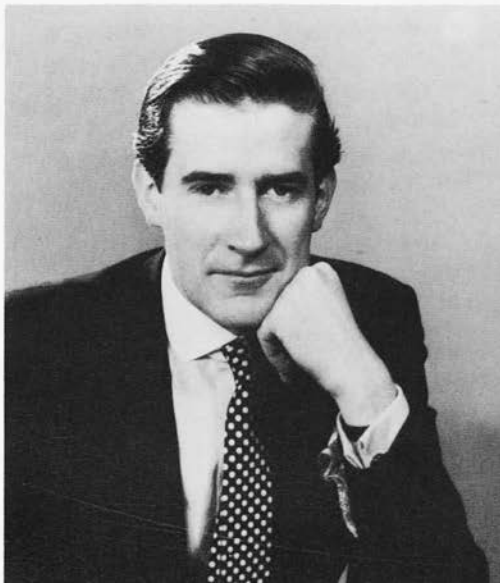
Specialty: water colors of botanical subjects, on vellum.

Work published in: Moreton, C. O. Old carnations and pinks. London, Geo. Rainbird, 1955. The Auricula. London, Collins, 1964.

Exhibition: Durlacher Bros. Gallery, New York, 1962.

In progress, an extensive series of water color plates of species of Tulips, based on the collection at University Botanic Garden, Cambridge, England.

Photo by A. G. Ingram



## MENTGES, Charlotte

- 142 Euonymus europaeus (Spindle-Tree). Water color. Sheet size  $7\frac{1}{2} \times 5\frac{7}{8}$ . Signed, undated [prior to 1955].
- 143 Lamium purpureum (Dead-Nettle). Water color. Sheet size  $5\frac{1}{2} \times 4\frac{1}{8}$ . Signed, undated [prior to 1955].
- 144 Commelina communis (Dayflower). Water color.  $5\frac{1}{2} \times 4$ . Signed, undated [prior to 1955].
- 145 Mulinum spinosum (Chilean Mulinum). Pen and ink.  $13\frac{1}{2} \times 11$ . Signed, dated 1963. Artist's copy. Original at Dept. Botany, Univ. Calif., Berkeley.

Charlotte Mentges. Born, Braunshardt, Germany, 1925. Attended art school, Frankfurt. Staff artist, Botanisches Institut der Universitat, Frankfurt am Main, 1953-55. Emigrated to U.S.A. 1955. Staff, Brooklyn Botanic Garden, 1955-57. Scientific Illustrator, Dept. Botany, Univ. Calif., Berkeley 1959 to date. Address: 2610 Etna St., Apt. 10, Berkeley, Calif.

Specialty: pen and ink drawings of botanical materials.

Work published in: Sharsmith, H. Spring flowers of the Bay Area. (In press); Hardin, G. J., Biology. San Francisco, Calif., W. H. Freeman, [1961]; Martin, A. C. & Barkley, W. D., Seed identification manual. Berkeley, Univ. Calif. Press, 1961; Also illustrations to papers in Bulletin Torrey Botanical Club, El Aliso, Brittonia, and Journal Arnold Arboretum.



## MERRILEES, Rebecca (Mrs.)

- 146 Cantharellus cibarius (Chanterelle). Gouache. 8 7/8 x 8 1/2.  
Signed, undated.

Rebecca A. Boyer Merrilees. Born, New York City, 4 January 1922. Studied at Boothbay Studios, Boothbay, Me., 1941, American School of Design, New York, 1942, and at Pratt Institute. Free-lance botanical illustrator. Address: Upper Vine St., Northfield, Vt.

Specialty: fungi, flowering plants, trees, and fruit; casein, water color, and gouache.

Work published in: Golden Book Encyclopedia of Natural Science; Home & Garden, Reader's Digest (cover, ferns, Oct. 1960), Every Woman, Field and Stream.



MOCKEL, Henry R.

- 147 Geraea canescens (Desert-Sunflower). Water color. 19 3/4  
X 15 1/4. Signed, undated [1964].
- 148 Geraea canescens (Desert-Sunflower). Serigraph (Silk-screen  
print). 16 1/2 X 10 5/8. Signed, [1964].
- 149 Geraea canescens (Desert-Sunflower). A selection from 16  
progressive color separations for serigraph. 17 1/2 X 11 1/2.
- 150 Proboscidea jussieui [Martynia proboscidea] (Unicorn-Plant,  
Devil's Claw). Serigraph (silk-screen print). 17 1/2 X 11 1/2.  
Signed, undated.
- 151 Cucurbita palmata (Coyote Melon). Data as for above.
- 152 Oenothera brevipes (Yellow Cups). Water color. 14 7/8 X  
9 7/8. Signed, undated.
- 153 Mentzelia involucrata (Sand Blazing-Star). Water color. 15 1/8  
X 11 1/8. Signed, undated.

Henry R. Mockel. Born, Berlin, Germany, 14 May 1905. Graduate, Gymnasium, Berlin. Studied at Grand Central School of Art, New York City. Co-owner, Pioneer Art Gallery, 5686 The Plaza, Twentynine Palms, Calif.

Specialty: botanical illustrator, endemic flora of the Southwest deserts;  
exponent of fine art production by silk screen technique.

Work published: 12 botanical subjects as post cards and note papers for  
and distributed by Los Angeles State and County Arboretum, Arcadia,  
Calif.; 40 botanical subjects as limited editions of silk screen prints,  
note papers, and cards distributed by Pioneer Art Gallery, Twentynine  
Palms, Calif. Illustrations in numerous magazines.

Exhibitions: Los Angeles State and County Arboretum; Albany (N.Y.) Insti-  
tute of History and Art.

## MURDOCH, Florence

- 154 Epipactis gigantea? Crayon. 16 7/8 × 12. Signed, dated July 1959.
- 155 Cercis canadensis (Redbud, Judas-Tree). Crayon. 17 7/8 × 12 1/4. Signed, dated Spring 1963. Artist's copy of original retained by her.
- 156 Kalmia latifolia (Mountain-Laurel). Crayon. 16 3/4 × 12 3/8. Signed, dated Summer 1963.

Florence Murdoch. Born, Lakewood, N.Y., 14 June 1887. Student, Urbana Univ. preparatory school, Univ. Cincinnati School of Applied Arts; Cincinnati Art Academy; Ohio Wesleyan Univ. Taught art in private schools and camps. Free-lance artist. Address: 3304 N. Sterling Way, Cincinnati 9, Ohio.

Specialty: full color crayon drawings of wildflowers, enlarged 10 times natural size.

Work published in: various journals, featured (in color) in Cincinnati Sunday Pictorial Enquirer, 21 April 1957.

Exhibitions: at 16 institutions and museums, including - Getz-Brown Gallery, Cincinnati, 1936; New York Botanical Garden, 1942; Ohio State Museum, 1945; Dept. of Recreation, Winston-Salem, N.C., 1947; Kingwood Center, Mansfield, O., 1954; Missouri Botanical Garden, St. Louis, 1955; Museum of Science, Boston, 1955; Bowdoin College, Brunswick, Me., 1964.



## MURMAN, Eugene Otto Walter

- 157 Pinus sabiana (Digger Pine). Water color. 10 3/8 × 8 7/8. Signed, artist's copy, dated 1962. Original at Biomedical Library, Univ. Calif., Los Angeles.
- 158 Quercus lobata (Valley Oak, Roble). Data as above, original dated March-Sept. 1952.
- 159 Photinia arbutifolia (Toyon, California-Holly). Data as above, original dated July-Nov. 1953.

Eugene Otto Walter Murman. Born, St. Petersburg (Leningrad), 18 April 1874. Attended College of St. Peter and Academy of Art in St. Petersburg. On staff of Russian and Commercial Bank ca. 1896-1905. Emigrated to Germany 1905, to Los Angeles 1906, as designer with Calif. Furniture Co., later as designer for W. & J. Sloane Co. Painted hundreds of plates in water color of insects, birds, and flowers as avocation. UCLA acquired set of 521 plates of native California plants. Died 17 March 1962.





## NAKAYAMA, Mitsu

- 160 Veitchia montgomeryana. Pen and ink. 19 × 14. Signed, dated 22 February 1957. Lent by L. H. Bailey Hortorium, Cornell Univ.
- 161 Datura metel (Cornucopia Plant). Pen and ink. 7 1/4 × 5 7/8. Signed, artist's copy, dated January 1964. Original dated January 1956, owned by Bailey Hortorium, reproduced in Baileya, March 1956.
- 162 Helianthus annuus (Sunflower). Data as for above, but dated August 1959 and reproduced in Baileya, September 1959.

Mitsu Nakayama. Born, New York City, 25 May 1915. Studied life drawing under George Bridgman, illustration from Frank Reynard, pen and ink drawing from Franklin Booth. Scientific illustrator, Bailey Hortorium, Cornell Univ., 1952 to date.

Specialty: pen and ink drawings of floral dissections and plant habits.

Work published in: Baileya, vols. 1-12; Gentes Herbarum, vols. 8-9.

Photo by Paul Arnold



NEWTON, Betty Jane

- 163 Rhododendron macrophyllum (California Rose-Bay). Pen and ink. 10 7/8 X 8 7/8. Signed, undated.

Betty Jane Campbell Newton. Born, London, England, 25 November 1908 (Canadian citizen). Assistant in Museum Technique, Provincial Museum of Natural History, Victoria, B.C., scientific illustrator. Address: 301 Moss St., Victoria, B.C.

Specialty: Museum displays of natural history; scientific illustration.

Work published in: Szczwinski, A. F. The Heath Family. Museum Handbook No. 19. British Columbia Provincial Museum of Natural History and Anthropology, Victoria, B. C., 1962. A cornerstone of Canadian culture. Victoria, B. C., Prov. Museum, 1939.

Photo, Campbell Studio



O'GORMAN, Helen (Mrs. Juan)

- 164 Columbnea scheideana. Water color.  $8 \times 12 \frac{7}{8}$ . Signed, undated. Reproduced in O'Gorman, H. Mexican flowering trees and plants.
- 165 Kohleria deppeana. Water color.  $12 \times 9 \frac{3}{4}$ . Signed, painted in Vera Cruz, dated January 1957. Reproduced as for No. 164.
- 166 Sobralia macrantha. Water color.  $12 \frac{1}{2} \times 10 \frac{1}{4}$ . Signed, with notation "Bahuchas, Zapatitos," undated. Reproduced as for No. 164.

Helen Lanpher O'Gorman. Born in Wisconsin, 1904. Graduate of Dept. of Fine Arts and Architecture, Univ. Washington. Moved to Mexico 1940. Author, artist, and sculptor. Address: Calzada San Jeronimo, Mexico 20, D.F., Mexico.

Work published in: O'Gorman, H. Mexican flowering trees and plants. Mexico, D.F., Ammex Asociados, [1961]. (104 col. pls. of 112 species).

PAPP, Charles Steven

- 167 Fungi, assorted genera and species. Carbon pencil. 20 × 15 1/2. Signed, undated. Reproduced in An introduction to scientific illustration.

Charles Steven Papp. Born, Debrecen, Hungary, 16 February 1917. M.A., M.S. Ferencz Jjozsef University. Completed Ph.D. requirements in entomology, Univ. Budapest 1943. Emigrated to U.S.A. December 1944. Scientific Illustrator, Univ. of Calif., Riverside and (part-time) for Rancho Santa Ana Botanic Garden, Claremont, Calif. Art Director, University Publishers, Riverside. Studio address: P.O. Box 5042, Riverside 7. Calif.

Specialty: Scientific illustration, especially entomology and botany.

Work published in: Papp, C. S. An introduction to scientific illustration. Riverside, Privately publ., 1963 (incl. 590 figs.). Papp, C. S. The beetle fauna of Hungary (transl. title). Budapest, 1943 (incl. reprod. of ca. 3,000 original drawings). Grant, V. The origin of adaptations. New York, Columbia Univ. Press, 1963.



PATTEN, Gerry V.

- 168 *Galeottia grandiflora* (A Costa Rican orchid). Dry-brush lamp-black wash.  $16 \frac{7}{8} \times 12 \frac{5}{8}$ . Signed, undated. Specimen growing in El Valle de General, near Volcan, Costa Rica, at 500 m.
- 169 Four tree-habit sketches by ink brush,  $13 \frac{1}{4} \times 10$ . Reproduced in Flowering trees for year-round color in Southern California.
- A. Grevillea robusta (She-Oak, Silk-Oak)
  - B. Castanospermum australe (Moreton-Bay-Chestnut)
  - C. Tipuana tipu (Tipu-Tree)
  - D. Metrosideros excelsa (New Zealand Christmas Tree)

Gerry V. Patten. Born, Hamonton, N. J., 22 November 1896. Artist and retoucher on staff Philadelphia Public Ledger (ca. 1920-27), attended Spring Garden Institute, Phila., studied under Frederick Anderson; commercial artist; free-lance artist and illustrator of nature work. Currently Staff artist, Los Angeles State and County Arboretum, Arcadia, Calif. Address: 301 North Baldwin Ave., Arcadia, Calif.

Specialty: lampblack wash drawings with dry brush; botanical and horticultural subjects.

Work published in: Sunset Magazine; Shackelford, F.H. Insect stories. San Francisco, Harr Wagner Co., 1941; Shackelford, F.H. Earth and sky trails. San Francisco, Harr Wagner Co., [ca. 1941]. Ayres, S., Jr. (Ed.) Flowering trees for year-round color in Southern California. Arcadia, Calif., Calif. Arboretum Foundation, 1964.

Exhibition: Botanical portraits in water color, Descanso Gardens, La Cañada, Calif., April 1964.



## PERTCHICK, Bernard and Harriet

- 170 Triplaris surinamensis (Long-John). Gouache. 11 × 13 1/8. Unsigned, undated [ca. 1949]. Reproduced in Flowering trees of the Caribbean.
- 171 Pachira insignis (Wild-Chestnut). Data as for above.
- 172 Jacaranda mimosifolia [J. filicifolia] (Jacaranda, Fern-Tree). Data as for above.
- 173 Couroupita guianensis (Cannon-ball Tree). Data as for above.

Bernard and Harriet Pertchick, natives of Brooklyn, N.Y., were a young couple married only a few months before accepting the assignment from the Alcoa Steamship Co. to paint the portraits for Flowering trees of the Caribbean. Neither is known to have had previous experience as a botanical illustrator, nor is either known to have executed any botanical or other art studies since then. Some of the plates were done by one, some by the other, and no one knows who did which.

Their method of operation is reported to have been to make quick sketches on location with color swatches, and to take color photographs of the same material. These, with rough pencil layouts, were transformed into the finished portraits after their return from the Caribbean. Details of the work were checked while it was in progress by staff botanists at the New York Botanical Garden.

Current address: 21 Sinclair Martin Drive, Roslyn, Long Island, N.Y.

## PINHEIRO, Jane S. (Mrs. J. C.)

- 174 [Left to right]: Castilleja chromosa [C. angustifolia] (Desert Paint-Brush); Haplopappus linearifolius (Goldenbush). Water color. 21 1/4 × 14 1/8. Signed, dated 29 April 1962.
- 175 Mentzelia laevicaulis (Blazing Star). Water color. 21 1/4 × 14 1/8. Signed, dated 17 July 1963.
- 176 Abronia villosa (Sand-Verbena). Water color. 14 1/8 × 21 3/8. Signed, dated Spring 1963.
- 177 Eschscholzia californica (California-Poppy). Data as for above.
- 178 Salvia columbariae (Chia). Water color. 21 3/8 × 14 3/8. Signed, dated 18 May 1961.

Jane Seymour Pinheiro. Born, Denver, Colo., 29 September 1907. Graduate Univ. Utah 1925. After 12 years in Los Angeles area, moved to Antelope Valley (Calif.). Active as community leader, conservationist, and artist. Currently a housewife and free-lance artist. Address: 4819 West Ave. M, Box 3404, Quartz Hill, Lancaster, Calif.

Specialty: desert wilddlowers of calif-ornia; water color. 100 originals given to the Theodore Payne Foundation, Santa Ana, Calif. 400 for exhibition purposes.

Exhibitions: Southwest Museum, Los Angeles; Santa Barbara Museum of Natural History; Descanso Gardens, La Canada; San Diego Museum of Natural History; Los Angeles County Museum; New York Botanical Garden.



POMEROY, Mary Barnas (Mrs. Fred G., Jr.)

- 179 Datura arborea (Angel's-Trumpet). Water color.  $12 \frac{1}{2} \times 9 \frac{1}{2}$ . Signed, undated.
- 180 Caladium bicolor (Caladium). Water color.  $9 \frac{3}{8} \times 6 \frac{1}{4}$ . Signed, undated.
- 181 Psidium guajava [P. pomiferum] (Common guava). Water color.  $9 \frac{3}{8} \times 6 \frac{1}{8}$ . Signed, undated.
- 182 Darlingtonia californica (California Pitcher-Plant, Cobra-Plant). Pen and ink.  $16 \frac{3}{8} \times 11 \frac{1}{4}$ . Signed, undated. Reproduced in Mason, A flora of the marshes of California (Fig. 247).

No. 182 lent by H. L. Mason, Dept. of Botany,  
Univ. Calif., Berkeley.

Mary Barnas Pomeroy (née Catharina Mary Barnas). Born, Frankfurt am Main, Germany, 3 March 1921. Educated in Germany until 1934, in Prague to 1936; attended college, Quito, Ecuador 1936-38; tutored in father's art studio in Quito 1938-46 (engaged part-time in botanical illustration for F. W. Pennell, Phila. Acad. Nat. Sciences); student at Penna. Academy of Fine Arts 1946-48. Currently housewife, mother, and portrait and landscape artist (husband is art teacher in Carmel Valley elementary schools). Address: 88 Boronda Rd., Carmel Valley, Calif.

Specialty: botanical illustrator, pen and ink, oils, water color.

Work published in: Mason, H. L. A flora of the marshes of California. Berkeley, Univ. Calif. Press, 1957. Egerod, L. E. An analysis of the siphonous Chlorophycophyta. Berkeley, Univ. Calif. Press, 1952. Metcalf, W. Native trees of the San Francisco Bay region. Berkeley, Univ. Calif. Press, 1959. Davidson, John F. The genus Polemonium, 1950.

Photo by J. Ziegler





## PUGH, Edward Joseph

- 183 Anigozanthus manglesii (Kangaroo-Paws). Pen and ink. 9 3/4  
× 7 1/2. Signed, undated. Reproduced in Lasca Leaves.
- 184 Musa sp. (Banana plant). Pen and ink. 9 3/8 × 11 3/8.  
Signed, undated. Reproduced in Lasca Leaves, Summer 1955.

Edward Joseph Pugh. Born, Pomona, Calif., 10 October 1926. B.S. Calif. Polytechnic Coll., San Louis Obispo. Studied under William Gregory, Pomona. Information aide, Los Angeles State and County Arboretum. Address: 1495 N. Gibbs St., Pomona, Calif.

Specialty: pen and ink illustrations of horticultural and botanical material.

Work published in: Lasca Leaves (Journal, California Arboretum Foundation) 1955 to date; and California Herald.



READIO, Wilfrid A.

- 185 Iris germanica (Bearded Iris). Lithograph. Composition area  $12 \times 9 \frac{3}{4}$ . Signed, no. 2 of 20, undated.
- 186 Cleome spinosa (Spider-Flower). Lithograph.  $12 \times 14 \frac{1}{2}$ . Signed, no. 1 of 9, undated.
- 187 Hosta plantaginea (White Plantain-Lily) and Galanthus sp. (Snowdrop).  $11 \frac{3}{4} \times 14 \frac{1}{2}$ . Signed, no. 6 of 12, undated.
- 188 Asclepias syriaca (Common Milkweed). Lithograph.  $12 \times 9 \frac{7}{8}$ . Signed, no. 1 of 18, undated.

Wilfrid Allen Readio. Born, Northampton, Mass., 27 November 1895. B.A. Carnegie Inst. Techn. 1918. Instructor in Fine Arts, C.I.T., 1919-22, Assist. Prof. 1922-28, Assoc. Prof. 1928-39, Prof. and Chm. Dept. 1939-55. Painter, lithographer, teacher. Died, 19 February 1961.

Specialty: painting and lithography; not primarily a botanical artist or illustrator, but made frequent use of botanical and horticultural materials as subjects for his work. His lithographs are in many institutions and private collections.

Exhibitions: Cleveland Print Club 1935; Art Institute of Chicago 1934, '35, '37, '40; Wichita Art Assoc. 1934-38; Library of Congress 1944, '45-'52, '57, '58; Soc. Amer. Graphic Arts 1950, '51. San Francisco Museum of Art 1955.



REID, Emily E. (Mrs.)

- 189 Carex spissa (Sedge). Pen and ink. 16 1/4 x 10 3/4. Signed, undated. Reproduced in Mason, A flora of the marshes of California (Fig. 119).

Emily E. Reid. Born, Omaha, Nebr., 12 February 1909. A.B. (Art) Univ. Calif., Berkeley 1931. Illustrator of botanical and zoological subjects Univ. California, Berkeley ca. 1935 to date. Currently, full-time Illustrator, Dept. Zoology, Univ. Calif., Berkeley. Address: 1818 Walnut St., Apt. 11, Berkeley, Calif.

Work published in: McMinn, H. and Maino, A. Manual of Pacific Coast trees. Berkeley, Univ. Calif. Press, 1935 (signed as Emily Patterson); McMinn, H. Manual of California shrubs. Berkeley, Univ. Calif. Press, 1957 (signed as Emily Thompson); Mason, H. L. A flora of the marshes of California. Berkeley, Univ. Calif. Press, 1957 (signed as Emily Reid).



RICHARDS, Albert G.

- 190 Aquilegia chrysantha (Golden-spurred Columbine). Radiograph.  $7 \frac{3}{4} \times 8 \frac{3}{4}$ . Signed, dated 1963.
- 191 Arisaema atropurpureum (Jack-in-the-Pulpit, Indian-Turnip). Radiograph,  $9 \frac{3}{4} \times 7 \frac{3}{4}$ . Signed, dated 1963.
- 192 Physalis alkekengi (Chinese-Lantern-Plant). Radiograph.  $7 \frac{3}{4} \times 9 \frac{3}{4}$ . Signed, dated 1963.
- 193 Lunaria annua (Honesty-Plant). Data as for above.
- 194 Lilium longiflorum (?) (Easter Lily). Radiograph.  $9 \frac{3}{4} \times 7 \frac{3}{4}$ . Signed, dated 1963.
- 195 Rose. Radiograph.  $7 \frac{3}{4} \times 9 \frac{3}{4}$ . Signed, dated 1963.

Albert G. Richards. Born, Chicago, Ill., 7 January 1917. B.S. (Chem. Eng.) Univ. Mich. 1940, M.S. (Physics) same 1943. Roentgenologist. Prof. Dentistry, School of Dentistry, Univ. Mich. 395 Rock Creek Dr., Ann Arbor, Mich.

Avocation: radiographs (X-ray photographs) of flowers.

Work published in: "New loveliness in Spring flowers" in National Geographic School Bulletin 40(27): 313, 320-321, (Apr. 16) 1962; Richards, A.G. "Floral radiography is my hobby" in The Michigan Botanist 2(1): 3-6, (Jan.) 1963. Also in Encyclopedia Britannica, McGraw-Hill, Annual Yearbook of Science and Technology (1963).

Exhibitions: University Musical Society, Ann Arbor, Mich.; Charles W. Bowers Memorial Museum, Santa Ana, Calif.



## RICKETT, Harold William

- 196 [Left to right, top to bottom]: Gillenia trifoliata (Indian-Physic, Bowman's-Root), G. stipulacea (American-Ipecac), Potentilla recta (Old-field Cinquefoil), P. norvegica, P. canadensis (Cinquefoil). Pen and ink.  $11 \frac{3}{4} \times 7 \frac{3}{8}$ . Unsigned, undated. Reproduced in The new field book of American wild flowers.
- 197 [Left to right]: Lespedeza violacea (Bush-Clover), L. repens (Creeping Bush-Clover), L. hirta, L. virginiana. Data as for above.
- 198 [Left to right]: Ipomoea purpurea (Common Morning-Glory), Convolvulus sepium (Hedge Bindweed), C. spithameus (Low Bindweed), C. arvensis (Field Bindweed). Data as for above.
- 199 [Lower left to right]: Mikania scandens (Climbing Hempweed), Eupatorium rugosum (White Snakeroot), E. dubium (Joe-Pye-weed), E. purpureum (Joe-Pye-weed). Data as for above.

Harold William Rickett. Born, Birmingham, England, 30 July 1896. A.B. Univ. Wisconsin 1917, A.M. 1920, Ph.D. 1922. Asst. Prof. Botany, Univ. Missouri 1922-24; Assoc. Prof. Botany 1924-39; Asst. Bibliographer N.Y. Bot. Gard. 1939-42, Bibliogr. 1942-63; Senior Curator of Botany 1961 to date.

Special interests: botanical illustration, fine bookbinding.

Illustrations published in, Rickett, H. W. The new field book of American wild flowers. New York, G. Putnam's Sons, 1963.

Photo, Carnegie Museum, Netting



ROBERTS, Patricia Hill

200 Lycaste skinneri. Water color. 24 × 17. Signed, dated 1964.

Patricia Hill Roberts. Born, Wichita, Kansas, 30 September 1927. Student at Wichita Univ.; Purdue Univ.; Univ. California, Los Angeles; Immaculate Heart College, Hollywood. Free-lance artist and commercial illustrator. Address: 465 S. Grand Ave., Pasadena, Calif.

Specialty: water color portraits of orchids; illustrator of childrens books, fashion illustrator, dress designer.

Work in: Heller, Orchids of Nicaragua; Fowlie, J.A. Monograph of the genus Lycaste (in preparation).



## SARTAIN, Emily

- 201 Cornus nuttallii (Mountain Dogwood, flowers and fruit). Water color.  $13 \frac{3}{4} \times 18 \frac{3}{4}$ . Signed, undated [ca. 1961].
- 202 Cornus nuttallii (Mountain Dogwood, autumn foliage). Water color.  $12 \frac{7}{8} \times 18 \frac{5}{8}$ . Signed, undated [ca. 1961].

Emily Sertain. Born, Goring Heath, Oxfordshire, England. Career as a free-lance botanical artist began in the early 1930's, and been developed intensely since then. Address: 1030 Cook St., Suite 18, Victoria, British Columbia.

Specialty: botanical portraits; water color.

Work published as floral note papers. Individual items reproduced in many journals and papers for color spreads see, Victoria Daily Times, Weekend Magazine (pp. 8, 9, 10, 12), 13 July 1963.

Awards: recipient of 10 medals, including the Royal Horticultural Society Gold Medal and the Grenfell Medal.

Exhibitions: Vancouver Art Gallery 1944; Montreal Art Gallery 1946; Provincial Museum, Victoria, 1947; Royal Horticultural Society 1953, and many others.



SHEEHAN, Marion Ruff (Mrs. Thomas J.)

- 203 Magnolia grandiflora (Southern Magnolia. Bull-Bay. In flower). Water color. 27 3/4 × 21 3/8. Signed, dated 1953.
- 204 Magnolia grandiflora (In fruit). Data as above, but dated 1954.
- 205 Camellia reticulata 'White Empress'. Water color. 13 1/4 × 11. Signed, dated 1962.
- 206 Camellia 'Pink Queen'. Data as for above.
- 207 Ophioglossaceae-Polypodiaceae. Plate to illustrate fern terminology and diagnostic characters of selected families. Pen and ink. 11 × 7 3/4. Unsigned, undated [ca. 1955]. Lent by G. H. M. Lawrence.
- 208 Pinaceae, Cupressaceae, Ephedraceae. Data as for above.

Marion Ruff Sheehan. Born, Philadelphia, Pa., 17 December 1923. B.A. (Botany) Univ. Cincinnati 1946; M.A. (Fine Arts) Cornell Univ 1950. Botanical illustrator, L.H. Bailey Hortorium, Cornell Univ. 1946-52 (work signed "R"). Free-lance illustrator 1952 to date. Address: 3823 S.W. 3rd Ave., Gainesville, Fla.

Specialty: botanical art and illustration; pen and ink, water color, pastel.

Work published in: Bailey, L. H. Manual of cultivated plants. Ed. 2 New York, The Macmillan Co., 1949. Lawrence, G. H. M. Taxonomy of vascular plants. New York, The Macmillan Co., 1951. Same, Introduction to plant taxonomy. New York, The Macmillan Co., 1955. Gentes Herbarum, vol. 7 (Figs. 156 et seq.) and 8 (to Fig. 117). Heller, C. A. Edible and poisonous plants of Alaska. 1953. Rev. ed. 1958. Care and feeding of garden plants. Natl. Fertilizer Assn. Wash., D.C. 1954. Moore, H. E., Jr. African violets, gloxinias, and their relatives. New York, The Macmillan Co., 1957. Watkins, John V. Your guide to Florida landscape plants. Pts. I and II. Gainesville, Fla., 1961, 1963. Noble, Mary. You can grow camellias. Princeton, Van Nostrand, 1962.





## SHERWOOD, Harold Frank

- 209 Cymbidium orchid. Radiograph.  $13 \frac{1}{8} \times 9 \frac{3}{4}$ . Reproduced in "Medical radiography and photography."
- 210 Stretlitzia reginae (Bird-of-Paradise). Radiograph.  $12 \frac{3}{8} \times 10 \frac{1}{4}$ . Reproduced as for above.
- 211 Asclepias syriaca (Common Milkweed). Radiograph. Data as for above.

Frank Harold Sherwood. Born, Friendship, N.Y., 6 February 1908. Research Associate, Eastman Kodak Co., specializing in low-voltage radiology. Address: Research Laboratories, Eastman Kodak Co., Rochester, N.Y. 14650.

Avocational interest: floral radiography.

Floral radiographs published in Sherwood, F. F. & Seemann, H. E. "The radiography of flowers." In, Medical radiography and photography 39(2): 48-51. 1963.

Awards: Rodman Medal, Royal Photographic Society, for work done in the field of low-voltage X-ray radiography.



## SMITH, Ethelynde

- 212 Romneya coulteri (Matilija-Poppy). Water color. 20 3/8 × 14 5/8. Signed, dated 1963. (Artist's copy; original retained by artist.)
- 213 Datura arborea (Angel's Trumpet). Water color. 25 3/4 × 20. Signed, dated 1959.
- 214 Echeveria gibbiflora 'Metallica' (Echeveria). Water color. 26 3/4 × 20 7/8. Signed, dated 1961.
- 215 Strelitzia reginae (Bird-of-Paradise). Water color. 20 1/8 × 15. Signed, dated 1963. (Artist's copy; original retained by artist.)

Ethelynde Smith. Born, Portland, Maine, 28 May 1888. Following a long career as a concert singer, relinquished because of illness, the avocation of botanical portraiture in water color became an abiding interest from about 1943 to date. Her portfolio of originals now numbers nearly 500, from which selections have been shown in 121 one-man exhibitions here and abroad. Address: 3022 N. Raymond Ave., Altadena, Calif.

Work published as wallpaper designs (United Wallpaper Co., Chicago), greeting cards (Brownie Co., N.Y.C.), Northwestern Mutual Life Insurance Co. (for internal use).

Exhibitions: Amer. Natural History Museum, New York; Chicago Natural History Museum; Boston Museum of Science; California Academy of Science, San Francisco; Rochester (N.Y.) Museum of Arts and Sciences; San Diego Natural History Museum, and scores of others.

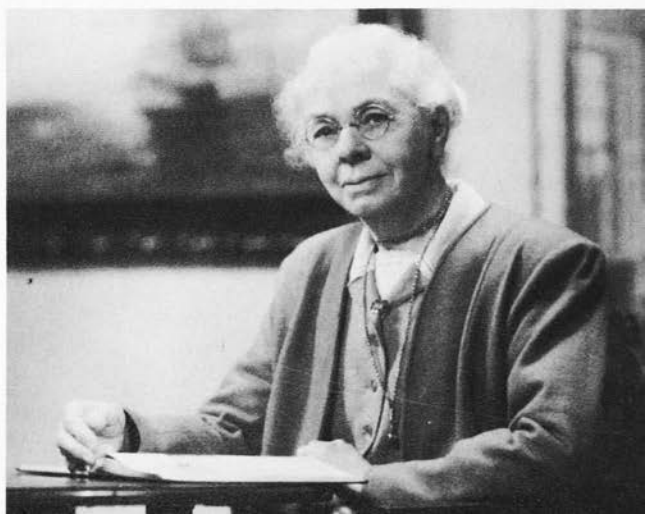


SNELLING, Lilian

- 216 Rhododendron argenteum. Gouache. 14 1/2 × 10 1/4.  
Signed.
- 217 Chionodoxa lucillae (Glory-of-the-Snow). Water color. 7 ×  
10 1/8. Signed, dated 1931.
- 218 Erodium corsicum (Corsican Heronsbill). Water color. 7 7/8  
× 11 7/8. Signed.
- 219 Rhododendron zeylanicum. Gouache. 8 1/2 × 11 1/8.  
Signed.
- 220 Coleus sp. Water color. 11 1/4 × 8 5/8. Signed.
- 221 Codonopsis subglobosa (Bonnet Bellflower). Water color.  
8 1/2 × 5. Signed.

Lilian Snelling. Born in England in 1879. Studied lithography under Morley Fletcher. Encouraged to become a botanical illustrator and artist by H. J. Elwes of Colesborne. She later painted the lily portraits reproduced in Groves and Cotton's Supplement (1934-40) to Elwes' Monograph of the genus Lilium. From about 1916-21 she was botanical artist to Sir Isaac Bailey Balfour, Regius Keeper of the Royal Botanic Garden, Edinburgh. Several hundred of her meticulous and brilliant water colors of species of Rhododendron, Primula, and other genera remain there unpublished.

After leaving Edinburgh she was appointed artist and lithographer to Curtis's Botanical Magazine, in which hundreds of her flower portraits have been published, retiring in 1952. During this period she executed the 15 water color portraits of peonies, reproduced in Stern, F.C. A study of the genus Paeonia. London, Royal Horticultural Society, 1946. In 1955 she was awarded the Royal Horticultural Society's highest honor, the Victoria Medal of Honor. Address: Spring Hall, St. Mary Gray, Kent, England.



STONES, E. Margaret

- 222 Banksia littoralis. Water color. 13 × 10. Signed, dated 1962.
- 223 Pittosporum undulatum (Victorian Box). Water color. 14 5/8 × 10 3/8. Signed (acquired 1952).
- 224 Floral composition: Arctotis stoechadifolia (African-Daisy), Tulipa, Petrea (?), Muscari sp. (Grape-Hyacinth). Water color. 10 1/2 × 7 3/8. Signed, undated. Reproduced in Mannerling, Flower portraits.
- 225 Floral composition: Crocus sp. (purple), Colchicum sp. (Pink Autumn-Crocus), Geum chiloense (?), Rubus sp. [in fruit], Aesculus sp. (Horse-chestnut, in fruit). Water color. 12 3/8 × 9. Signed (acquired 1952).

Elsie Margaret Stones. Born, Colac, Victoria, Australia, 30 August 1921. Studied at Swinburne and National Gallery Art Schools, Melbourne. Came to England, March 1951, worked independently at Royal Botanic Garden Herbarium, Kew and at British Museum (Natural History), London; also in the Herbarium, Jardin de l'Etat, Brussels. Artist to Curtis's Botanical Magazine (Royal Hort. Soc.) since 1955. In Australia, 1961-62 on commission to execute 20 large plant portraits for Art Advisory Board, and 35 Tasmanian endemics for a private patron.

Specialty: water color portraits of botanical subjects, also in pen and ink.

Work published in: Stern, F.C. Snowdrops and snowflakes. London, Roy. Hort. Soc., 1956; Cox, E.H.M. & P.A. Modern rhododendrons. London, Nelsons, 1956; Modern shrubs. London, Nelsons, 1958; modern trees. London, Nelsons, 1961. Mannerling, E. Flower portraits. London Ariel Press, 1961.

Exhibitions: one-man shows in Melbourne and Sydney; represented in the National Gallery of Victoria and of New South Wales.



TILLET, Stephen S.

- 226 Pinaceae. [Items a-h]: Pinus murrayana (Lodgepole Pine);  
[Item i]: Abies concolor (White Fir); [Item j]: Pseudotsuga  
menziesii (Douglas Fir). Pen and ink.  $6 \times 9 \frac{1}{2}$ . Unsigned,  
undated. Reproduced in Munz, A California flora (Fig. 5).  
Lent by P. A. Munz, Rancho Santa Ana Botanic Garden, Clermont,  
Calif.
- 227 Liliaceae. [Items a-c]: Lilium humboldtii (Humboldt Lily);  
[Items d-f]: Calochortus catalinae (Catalina Mariposa-Lily).  
Pen and ink.  $7 \frac{1}{4} \times 9 \frac{1}{2}$ . Other data as for above (Fig.  
126 of A California flora).

Stephen Szlatenyi Tillet. Born, Providence, R.I., 3 June 1930. B.S. Utah  
State Univ. 1953, M.S. 1955, Ph.D. (Botany) Claremont College 1960; Inst-  
ructor Botany, Pomona College 1957-58; Research Assoc. New York Botanic  
Garden 1959-61; Prof. Botany, Occidental College 1961 to date.

Avocational interest: botanical illustration, pen and ink.

Work published in: Munz, P.A. A California flora. Berkeley, Univ. Calif.  
Press, 1959.



TODD, Anne Ophelia (Mrs. Raymond B. Dowden)

- 228 Asclepias syriaca (Common Milkweed). Gouache and crayon.  $16 \frac{3}{4} \times 14 \frac{1}{4}$ . Signed, dated 1951. Reproduced in Life magazine (1952).
- 229 Rocky Mountain Wildflowers. [Left to right, top to bottom]: Penstemon barbatus (Scarlet Beardtongue), Linum lewisii (Flax), Callirhoe involucrata (Poppy-Mallow), Mimulus lewisii (Lewis' Monkey-Flower), Pulsatilla ludoviciana (Pasqueflower), Sedum stenopetalum (Stonecrop), Aquilegia caerulea (Colorado Columbine), Dodecatheon pulchellum (Shooting-Star). Water color.  $19 \frac{1}{4} \times 14 \frac{1}{4}$ . Signed 1956. Reproduced in Life magazine (1957).
- 230 Pacific Coast Wildflowers. [Left to right, top to bottom]: Mimulus guttatus (Common Monkey-Flower), Lilium pardalinum (Leopard Lily), Iris douglasii (Golden Iris), Delphinium variegatum (Royal Larkspur), Eschscholzia californica (California-Poppy), Dicentra formosa (Pacific Bleeding-Heart), Camassia quamash (Common Camass). Water color.  $19 \frac{3}{8} \times 14 \frac{1}{4}$ . Signed, dated 1956. Reproduced in Life magazine (1957).
- 231 Smilax heracea (Carrion-Flower). Gouache and crayon.  $16 \frac{7}{8} \times 12 \frac{1}{4}$ . Signed, dated 1951. Reproduced in Life magazine (1952).

Anne Ophelia Todd. Born, Denver, Colo., 17 September 1907. Student, Univ. Colorado 1925-26; B.A. (Fine Arts) Carnegie Institute of Technology 1930; studied at Beaux-Arts Institute of Design, Art Students' League of New York. Chairman, Art Dept., Manhattanville College, N.Y. 1932-53. Freelance textile designer, botanical illustrator. Address: 205 West 15th St., New York 11, N.Y.

Specialty: water color illustrations of flowers.

Work published in: Life magazine, "Edible wild plants" (26 May 1952), "Flowering shrubs" (11 April 1955), "Evergreens" (5 December 1955), "Wild flowers for gardens" (27 May 1957); House beautiful, "Salad herbs" (May 1960). Natural history magazine, "Plants of the Bible" (June 1961).

Exhibitions: Carnegie Institute, Pittsburgh; Whitney Museum Biennial, 1936; Metropolitan Museum exhibition of industrial art, 1940; Metropolitan Museum, American textiles, 1948; Silvermine Artists Guild, 1955; Cooper Union Museum, 1956; Brooklyn Botanic Garden, 1957.



TOURJÉ, Margaret Stabler (Mrs. E. C.)

- 232 Camellia 'Carl Tourje'. Water color.  $18 \frac{1}{4} \times 13 \frac{1}{2}$ .  
Signed, undated [1964].
- 233 Camellia 'Giulio Nuccio'. Data as for above, but  $17 \times 13$ .

Margaret Stabler Tourjé. Born, Omaha, Nebraska, 21 April 1889. Address:  
225 Gardenia St., Camarillo, Calif.

Specialty: Camellia portraits in water color. Commercial decoration of  
figurines and pottery.

Work published in: Threlkeld, J. The Camellia. Princeton, N.J., Van Nos-  
trand, 1962.

TSENG, Charles C.

- 234 Pteryxia davidsonii. Pen and ink. 15 × 10. Signed, dated September 1962.
- 235 [Left]: Oreomyrrhis taiwaniana; [right]: O. involucrata. Pen and ink. 8 7/8 × 6 1/2. Signed, dated 1960.

Charles C. Tseng. Born, Fukien, China, 20 December 1932. B.S. Taiwan Normal Univ. 1955; M.S. National Taiwan Univ. 1957. Graduate Research Assist., Dept. Botany, Univ. Calif., Los Angeles 1960 to date.

Specialty: systematic botany; illustrates own publications.

Work illustrated: Tseng, C.C. Theobald, W.L., & Mathias, M.E. "A revision of Aletes and Neoparrya" In, Brittonia (in press).





## VELICK, Bernadette Stemler (Mrs. Sidney F.)

- 236 Perebea guianensis (Perebea). Pen and ink. 13 1/8 × 10 1/4.  
Signed, undated.
- 237 Triplaris cumingiana, T. pyramidalis, T. melaenodendron. Data  
as for above.

Bernadette Stemler Velick. Born Seattle, Wash. 1918. Student at Univ. Wash. 1937-38, Johns Hopkins School of Medical Art 1939-40, Yale School of Fine Arts 1942. Free-lance artist and illustrator. Address (until June 1964): 6911 Columbia Pl., St. Louis, Mo.

Specialty: Medical and biological art; pen and ink, water color.

Work published in: Woodson, R.E., Jr., & Schery, R.W. "Flora of Panama" in, Annals Missouri Bot. Gard. (publ. 1940-49). Davies, Human developmental anatomy. Morris, H. Human anatomy.

WATSON, Patricia (Mrs. James Rennie)

- 238 Malus pumila (Apple, fruit). Water color.  $6 \frac{3}{8} \times 5 \frac{1}{2}$ .  
Signed, dated 1960.
- 239 Fritillaria pallidiflora (Siberian Checkered-Lily). Water color.  
 $12 \frac{1}{4} \times 7 \frac{7}{8}$ . Signed, dated 1959.
- 240 Sophranitis coccinea [S. grandiflora] (Sophranitis Orchid).  
Water color.  $8 \frac{3}{4} \times 6 \frac{1}{2}$ . Signed, dated 1960.
- 241 Carduus nutans (Musk Thistle). Water color.  $10 \frac{7}{8} \times 7 \frac{3}{4}$ . Signed, dated 1957.

Patricia Watson. Born, London, England, 4 June 1931. M.A. (History) St. Andrew's Univ., Scotland, M.A. (Philosophy) same. Independent botanical artist at Royal Botanic Garden, Kew, 1956-61. Address: 87 Sloane St., London S.W. 1, England.

Specialty: free-lance botanical illustration and art; water color, pen and ink. Ceramic design and art.

Work published in: Wood, E. Pipterocarpus; and Bor, Surrat Grasses.

Exhibitions: Royal Academy of Arts and Royal Watercolor Society, London.

